



Road Maintenance
&
Asset Management
Plan
for the Road Network

ROADS MAINTENANCE & ASSET MANAGEMENT PLAN

INDEX

SECTION 1: INTRODUCTION

- 1.1 Purpose of the Plan
- 1.2 Definitions

SECTION 2: GENERAL

- 2.1 The Importance of Road Maintenance
- 2.2 Road Maintenance Strategy
- 2.3 Sustainable Road Maintenance
- 2.4 Objectives of the Plan
- 2.5 Managing Complaints
- 2.6 Legal Framework
- 2.7 Health & Safety
- 2.8 Management of Risk

SECTION 3: MAIN ELEMENTS OF THE PLAN

- 3.1 Network Hierarchy
- 3.2 Network Inventory
- 3.3 Category of Maintenance
- 3.4 Training and Development
- 3.5 Inspection Regime
- 3.6 Safety Inspections
- 3.7 Recording of Defects
- 3.8 Service Inspections
- 3.9 Methodology of Inspections
- 3.10 Condition Standards

SECTION 4: MATERIALS AND TREATMENTS

SECTION 5: PROCESSES

- 5.1 Quality Management and Sector Schemes

SECTION 6: DEPOTS AND MATERIALS STORAGE

SECTION 7: STREET LIGHTING

SECTION 8: MEASURING PERFORMANCE

- 8.1 Continuous Improvement
- 8.2 Method of Measuring
- 8.3 Performance Indicators
- 8.4 Benchmarking

SECTION 9: PROGRAMMING AND PRIORITIES

SECTION 10: WINTER AND OTHER EMERGENCIES

- 10.1 Introduction
- 10.2 Winter Service Operational Plan
- 10.3 Weather Forecasting and Detection Systems
- 10.4 Services
- 10.5 Weather and Other Emergencies

SECTION 11: ANNUAL BUDGET PROCESS

- 11.1 Annual Process
- 11.2 Overview Process Map

APPENDIX 1 ROAD HIERARCHY

APPENDIX 2 GUIDE TO TRAINING LEVELS

APPENDIX 3 DEFECT INTERVENTION LEVELS

APPENDIX 4 CONDITION STANDARDS

APPENDIX 5 FINANCIAL BREAKDOWN (SEPARATE DOCUMENT)

- A Average Revenue Spend 2001-2004
- B Rates for each Maintenance Activity
- C Calculation of Rates for each Maintenance Activity
- D Totals for each Activity

ROADS MAINTENANCE & ASSET MANAGEMENT PLAN

1 INTRODUCTION

1.1 PURPOSE OF THE PLAN

1.1.1 The main purpose of road maintenance is to ensure that the road network is available for the safe and convenient movement of people and goods. This purpose however needs to be set within the wider contexts of integrated transport, Best Value and the corporate vision of the Council.

1.1.2 The purpose of this plan is to design a sustainable maintenance regime capable of managing the road network asset within the available resources and ensuring that the asset will be available for future generations.

1.1.3 What the Plan does :-

The plan will set condition standards for the various elements of the road network and optimum timescales for the various activities that are undertaken to maintain the condition of the road network. This is achieved by :-

1. Collecting Inventory

By collecting and quantifying the relevant inventory along each length of road (width, length, number of gullies etc., lengths of ditches, walls, footways) the workload required to maintain the road network to the relevant standard can be established and costed.

2. Establishing the Hierarchy of the Roads

The hierarchy or importance of each road link will be used to decide the standard of maintenance to be applied, the regulatory of inspections and the prioritising of the repairs to be undertaken.

3. Setting Standards for the Condition of the Network to be Maintained at

The maintenance plan sets the standards that the road will be maintained at taking into account the relevant factors such as importance of the route, traffic volumes, population served and the available overall budget.

4. Inspecting

Frequency of inspections to identify faults will be set for each route.

5. Prioritising Repairs

The urgency of repairs required will be set and available resources allocated to repairing the most important faults as a priority.

6. Matching workload to available budget

If funds are inadequate the standards of maintenance will be adjusted to balance the workload to match the available budget.

7. Programming Work

The overall workload having been identified will allow the most efficient programme of works to be set for completion during the financial year.

Each year this process will be reviewed and repeated to match the new budget and any increase in costs.

1.2 DEFINITIONS

Benchmark

A parameter of data, process or function used for comparison.

Carriageway

The part of the road laid out for use by motor vehicles.

Cycleway

Collective term for all segregated facilities laid out for use of cycles.

Footway

Collective term for all segregated facilities laid out for use of pedestrians.

List of Public Roads

Register of public roads maintained by authorities.

Performance Indicator

The measure of performance in exercising a function.

Performance Standard

The minimum acceptable levels of performance in the exercise of a function and measured by reference to a performance indicator for that function.

Performance Target

The level of performance in the exercise of a function that is expected to be achieved over a minimum period of a year and measured by reference to a performance indicator for that function.

Pavement

Collective term for the construction of all running surfaces.

Road

Any way over which there is a public right of passage and includes the road's verge, and any bridge over which, or tunnel through which the road passes.

Safety Inspection

Inspection to identify all defects likely to create danger or serious inconvenience to users.

Service Inspection

Inspection to identify all defects likely to compromise serviceability.

Sustainability

To ensure that financial and operational resources are provided to avoid progressive deterioration of the asset.

2 GENERAL

2.1 THE IMPORTANCE OF ROAD MAINTENANCE

- 2.1.1 The importance of road maintenance and its relevance to the integrated transport agenda has never been more widely recognised. The inevitable consequences of significant under-investment over many years are increasingly visible and the subject of considerable public concern. Acceptable standards of safety and serviceability have been difficult to maintain and, perhaps more importantly, the ability of the network to effectively fulfil its wider community potential has been severely compromised.
- 2.1.2 The response of most authorities, including Argyll and Bute, to funding constraints has been to focus on limited short term repairs to the surface of carriageways and footways in order to address their legal responsibilities for safety and mitigate the financial consequences of claims. Necessary works of resurfacing and reconstruction have been deferred as long as possible, well beyond the optimum point for treatment, with the result that progressive deterioration has continued and eventual costs of repairs increased. In these circumstances, of course, it has been difficult to address many other areas of public concern as required by Best Value.

2.2 ROAD MAINTENANCE STRATEGY

- 2.2.1 The strategy of the Road Maintenance and Asset Management Plan is to achieve a regime that ensures :-

Road Network Safety

- Complying with statutory obligations
- Meeting users needs

Road Network Serviceability

- Ensuring availability
- Achieving integrity
- Maintain reliability
- Enhancing quality

Road Network Sustainability

- Minimising cost over time
- Maximising value to the community
- Maximising environmental contribution

2.3 SUSTAINABLE ROAD MAINTENANCE

- 2.3.1 A significant area of change is in the need for road maintenance to meet the challenge of sustainability. This requires that the wider economic, social and environmental implications of both the service and individual schemes are understood and then modified so far as practicable to ensure Best Value outcomes for the community.

2.4 OBJECTIVES OF THE PLAN

- 2.4.1 To develop a policy for road maintenance, consistent with the wider principles of integrated transport, sustainability and Best Value .
- 2.4.2 To focus on the needs of users and the community, and their active involvement in the development and review of policies, priorities and programmes.
- 2.4.3 To adopt an efficient and consistent approach to asset management, with the collection, processing and recording of road inventory and road condition information, for the purpose of both local and national needs assessment, management and performance monitoring.
- 2.4.4 To adopt a risk management approach in determining local technical and operational standards.

2.5 MANAGING COMPLAINTS

- 2.5.1 All complaints received from whatever source will be logged onto a database. This will be managed on an area by area basis but allowing council wide interrogation of the data. All complaints will be prioritised, with safety defects being classified at the highest level. All other complaints will be assessed by technical staff and acted upon in the most appropriate manner. Where possible feedback will be given to the complainants on the progress of their complaints.

2.6 LEGAL FRAMEWORK

- 2.6.1 In addition to a general duty of care, there are a number of specific pieces of legislation, which provide the basis for powers and duties relating to Road Maintenance. The main legislation is contained in the Roads (Scotland) Act 1984, Section 1, which imposes a duty on local roads authorities, to maintain all public roads, to keep a list of “public roads” and to maintain and manage the list. Section 34 of the Act specifically imposes a duty on the authority to “take steps as they consider reasonable to prevent snow and ice endangering the safe passage of pedestrians and vehicles over public roads”.
- 2.6.2 The New Roads and Streetworks Act 1991, is an enabling Act setting out the duties of Authorities to co-ordinate and regulate works carried out in the road for provision and maintenance of utility services by an organisation, and gives effect to a series of Regulations and Codes of Practice.
- 2.6.3 The Scottish Executive are presently consulting Local Authorities as to further powers being granted to reinforce the supervision of the work and the utilities.
- Specification for the reinstatement of openings in the road
 - Measures necessary when apparatus is affected by major works (Diversionary Works)
 - Safety at road works and street works
 - Co-ordination of Streetworks
 - Inspections
 - Record Keeping

2.7 HEALTH AND SAFETY

- 2.7.1 The Health and Safety at Work Act 1974, together with the Management of Health and Safety at Work Regulations 1992 and Construction (Design and Management) Regulations 1994 make it a requirement that road authorities carry out work in a safe manner and establish arrangements for the management of construction works.
- 2.7.2 There are also a wide range of regulations and Codes of Practice which relate to the assessment, prevention and management of health and safety risks on site and the reporting of injuries and other incidents. Risk assessments of all aspects of the work have been carried out and these are reviewed regularly. From these risk assessments a book of "Safe Working Methods at Roadwork's " has been produced and is the basis of safe working on all road maintenance works.
- 2.7.3 All those involved in the planning, management, and delivery of the road maintenance service will receive training and regular updating as necessary on the health and safety requirements of the service.

2.8 MANAGEMENT OF RISK

- 2.8.1 The management of road maintenance, including the establishment of regimes for inspection, setting standards for condition, determining priorities and programmes, will be taken against a clear comprehensive understanding and assessment of the risks and consequences involved.
- 2.8.2 The most commonly recognised risks affecting the service, relate to the safety of the network and accidents, injury or health risks relating to users and employees. Other risks relating to the other key objectives of road maintenance, serviceability and sustainability that have also been included in the assessment, are detailed below :-
- (a) Network loss or serious failure
 - (b) Operational
 - (c) Environmental
 - (d) Financial
 - (e) Contractual

3 MAIN ELEMENTS OF THE PLAN

The development and delivery of a road maintenance and asset management plan has been based upon the following elements :-

3.1 NETWORK HIERARCHY

- 3.1.1 In order to prioritise the allocation of available funds it is necessary to establish the hierarchy of roads within the network.
- 3.1.2 Hierarchies for all elements of the road network, footways and cycleways are defined in Tables 1-3. They have been determined to reflect the needs, priorities and actual use of each road in the network. The hierarchies have been applied to take account of local circumstances, for example the influence of schools and hospitals etc.

ROAD HIERARCHY

TABLE 1

Rank	Hierarchy Description	Type of Road	Detailed Description
1	Strategic Road	Linking large main centres of population. Linking large main centres of population to Trunk road network.	Routes for fast moving long distance traffic with little frontage access or pedestrian traffic. Generally speed limits are in excess of 40mph and there are a few junctions. Normally two lane with no footway.
2	Main Distributor	Lifeline Routes connecting secondary centres of population to main population centres and Trunk road network.	These routes provide lifeline access from small villages to services within main population areas. They are of varying widths and not always capable of taking two way traffic.
2a	Urban Distributor	Main routes within built up areas. Bus routes and routes to hospitals. Routes linking urban routes to Strategic roads.	Routes between Strategic Roads and urban areas. Main routes within urban areas linking to commercial areas of towns and larger villages. Routes to Hospitals, Main Schools and other strategic buildings. On street parking is generally unrestricted and speed limit is 30mph with random pedestrian movement. Normally two lane with adjacent footways.
3	Minor Roads	Routes serving small settlements and individual access.	Lightly used lifeline routes serving small isolated communities, individual access to property and land. Predominately narrow single carriageway.
3a	Minor Urban Roads	Minor roads within urban areas	Residential loop roads or culs-de-sac. With or without footways and within 30 mph restriction. Spur roads to commercial areas

FOOTWAY HIERARCHY

TABLE 2

Rank	Hierarchy Description	Type of Footway	Detailed Description
1	Strategic Footways	Main footways and pedestrianised areas within urban areas	Medium to high usage routes through Urban shopping areas. Routes to main schools, routes to hospitals and access to main transport links. A mixture of blacktop surfacing and paving slabs or blocks.
2	Secondary Footways	All other footways including Link footpaths	Linking local access footways through urban areas and busy rural footways. Footways with low usage, culs de sacs, and minor housing streets.

CYCLEWAY HIERARCHY

TABLE 3

Rank	Description
A	Cycle-lane forming part of the carriageway, commonly 1.5m strip adjacent to nearside kerb.
B	Cycle track, a route for cyclists not contiguous with the public footway or carriageway. Shared cycle / footway either segregated by a white line or other physical segregation

3.1.3 Any changes in the criteria affecting any road link will require a reassessment of its category.

3.1.4 The categories of each road link shall be confirmed on a biennial basis .

3.1.5 The list of road links and their categories is contained in Appendix 1.

3.2 NETWORK INVENTORY

3.2.1 The detailed inventory will allow a maintenance regime to be established. The basis for this inventory will be the List of Roads. All assets within the network shall be recorded and referenced to the List of Roads. The level of detail that will be used is shown below. This inventory will be the basis of quantifying and establishing the annual maintenance programme to be carried out within the constraints of each years budget. Any shortfall in available budget compared to desirable works programme will be reported to Area Committees in the first instance.

INVENTORY INFORMATION

Carriageway	Road length and width
Footway	Footway length, width by side.
Footway Precincts	By Area
Gullies	Number
Street Lighting Columns	Number Single Head, Number Double Head
Illuminated Signs and Bollards	Number
Road Signs	Number
Lines and Markings	Length Centre, Edge lines , Junctions, other Markings
Grass Verges	By Length, width and side
Amenity Cuts	By Area
Main Sight lines	By Area and location
Boundary Fences and walls belonging to Authority	By Type and Length
Safety Fences	By Type and Length
Drainage Ditches	By Length and side
Pipe Drainage	By Length and Dia.
French Drains	By Length and Dia.
Manholes and Silt Traps	Number
Safety Kerb/Beany Block etc/ kerbs not part of footway	By Length
Culverts	By Diameter, Length and Construction

3.3 CATEGORY OF MAINTENANCE

3.3.1 Maintenance will be split into various types of activities as shown below, each contributing in varying degrees to the maintenance objectives of safety, serviceability and sustainability. In each case the standards and delivery arrangements have been established with regards to these objectives and have been based on desired outcomes.

3.3.2 Reactive

Responding to inspections, complaints or emergencies.

Priority	Description
1st	Sign and make safe
2nd	Make initial temporary repair
3rd	Provide permanent repair (note 2 nd step may be missed and repair made permanent first time)

3.3.3 Routine

Regular consistent schedule, for drainage works, patching and verge maintenance.

Activity	Description
Drainage	Cleaning ditches, clearing offlets, Gully cleaning, Culvert grills, jetting of french drains safety kerb etc. and cleaning silt traps
Carriageway	Patching, slurry seal and edge repairs, Jet Patcher
Footway / Cycleways	Patching, slurry sealing and kerb repairs.
Verge Maintenance	Grass cutting, scrub cutting and verge repairs
Fences and barriers	Painting , inspection and repair
Traffic signs & signals	Repair, clean & replace
Road Marking and Studs	Refresh and replace
St Lighting	Repair and maintain
Bridges	Minor works and repairs

3.3.4 Programmed

Planned schemes primarily surface dressing, resurfacing and new drainage works.

Activity	Description
Carriageways	Minor works:- Reconstruction, Resurfacing, Surface dressing, Edge Strengthening
Footway	Minor works:- Reconstruction, Resurfacing, Slurry sealing and kerbing
Drainage	Culvert replacement, New Ditches / Cut off Ditches / French drain
Bridges / Structures	Major bridge repairs, walls, embankment repair
Lighting	Column and cable replacement

3.3.5 Regulatory

Inspection and regulating the activities of others e.g. NRSWA.

Legislation	Activity Description
Road (Scotland) Act 1984	Keeping list of Roads up to Date. Maintaining all public roads.
New Roads and Streetworks Act	Enforcement of New Roads and Street Works Act including inspections of utilities reinstatements. Maintaining local Street Gazetteer. The co-ordination of works within the road.
Road (Scotland) Act 1984	Road Opening Permits, Road closures Skip Permits, Scaffolding Permits, Illegal Signs etc
Flood Prevention and Land Drainage (Scotland) Act 1997	Duties given to the Council under this Act are not covered in this plan
Road Traffic Act 1984	Temporary Traffic orders

3.3.6 Winter

Winter Maintenance

Activity	Description
Pre- Treatment	Preventative Salting
Treatment	Suitable Treatment for prevailing conditions.
Snow	Clearing of snow from carriageway.

3.3.7 Emergencies

Weather and other emergencies.

Activity	Description
Major	Landslides etc.
Flooding	Clearing of floods, signing to make safe.
High Winds	Clearing of Fallen Trees.
High Temperatures	Melting Bitumen (Surface Dressing) etc
Others	Road Crashes, Oil spillages, debris etc.

3.4 TRAINING AND DEVELOPMENT

3.4.1 All personnel involved in road maintenance will be trained in order to demonstrate levels of competence commensurate with their responsibilities. This shall be achieved and maintained by a combination of in-house and where appropriate external training e.g. certification for plant operators. Levels of training shall be reviewed annually and updated as required. See Appendix 2 for a general guide to staff training levels.

3.5 INSPECTION REGIME

3.5.1 An effective regime of inspection, assessment and recording is a crucial part of road maintenance. It will provide the basic information for addressing the key objectives of this road maintenance plan.

3.5.2 Inspections will be carried out using two different methods. These are :-

(1) Safety Inspections

(2) Service Inspections

Both methods are described in more detail below.

3.6 SAFETY INSPECTIONS

3.6.1 These are designed to identify all defects likely to create a danger to the network users.

3.6.2 The frequency with which these inspection are undertaken on any part of the network is determined by its position within the hierarchy shown in Table 1. A list of frequency of safety inspections is set out in Table 4 below.

TABLE 4

Feature	Rank	Hierarchy Description	Frequency	Method
Roads	1	Strategic Roads	2 Monthly	Driven
	2	Main Distributor	3 monthly	Driven
	2a	Main Distributor Urban	3 Monthly	Driven / Walked
	3	Minor Roads	Annually	Driven / Find and Fix
	3a	Minor Roads Urban	Annually	Driven / Find and Fix
Footway	1	Strategic Footway	4 Monthly	Walked
	2	Secondary Footway	Annually	Driven / Walked
Cycleway	A		6 Monthly	Driven / Cycled
	B		6 Monthly	Walked / Cycled

3.6.3 The adequacy of this inspection regime will be reviewed annually.

3.6.4 The basis of establishing the frequency of inspection is the balance between the rate of deterioration of the road and the degree of risk any defect has on road users.

3.7 RECORDING OF DEFECTS

3.7.1 During safety inspections all observed defects that constitute a degree of risk to users will be recorded. Depending on the degree of risk assessed these defects will be divided into the following two categories :-

Category 1 will be those that require prompt attention because they represent an immediate or imminent hazard or because there is a risk of short-term structural deterioration.

Category 2 will be all other defects

3.7.2 They will be repaired according to the timescales identified in Table 5. Details of intervention levels that will be applied are shown in Appendix 3.

DEFECT REPAIR TIMESCALES

TABLE 5

Category	Description	Action	Timescale
Cat 1	Dangerous defects :- danger to life	1. Immediate make safe where practicable within 2 hrs. 2. By end of next working day. 3. Permanent repair	1. Signing and Guarding to protect public from defect (24hrs 7 days/week). 2. Temporary repair or First time permanent repair where possible. 3. Within 28 days.
Cat 1	Safety defects	2. Temporary repair or First time permanent repair where possible 3. Permanent repair	2. By end of next working day. 3. Within 28 days.
Cat 2	Defects	Timing depending on degree of deficiency, traffic volumes, location other works.	Planned within routine maintenance programme of works. Normally completed within 28 days.

3.8 SERVICE INSPECTIONS

3.8.1 Service inspections will be carried out primarily to identify deficiencies that compromise the reliability, quality, comfort and ease of use of the network. Although not intended for identifying defects that could compromise user safety, any such defects observed during service inspections will be recorded and dealt with in the same way as safety inspections.

3.8.2 Categories of Service Inspections available for use :-

- a. Machine Driven Surveys
- b. CVI (Course Visual Inspections)
- c. DVI (Detailed Visual Inspections)
- d. Inspections for Regulatory Purposes e.g. NRSWA

Details of the above types of service inspections are detailed in Table 6.

SERVICE INSPECTIONS

TABLE 6

TYPE	DESCRIPTION	FREQUENCY
Machine Driven Surveys	<p>Scottish Road Maintenance Condition Survey (SRMCS) is carried out annually using machine survey techniques. At present it measures Texture, rutting and profile. Measurements for cracking and edge damage are to follow. 100% of A class roads will be surveyed annually, B and C class Roads will be surveyed bi-annually and all others will be surveyed every 4 years.</p> <p>The software that will analysis these results to full UKPMS (United Kingdom Pavement Management System) and produce information and maps of areas that are below the set criteria.</p> <p>These result also form part of our Statutory KPI returns for road condition.</p>	Annually by contract (WDM)
Course Visual Inspection	<p>Normally carried out from a slow moving vehicle. Rather than recording detailed measurements of individual defects, the survey identifies and categorises lengths of features having generally consistent defects.</p> <p>This survey would include all aspects of the network including Drainage, Embankments, Trees and Scrub, Fences, Traffic Signs and Road Markings</p>	<p>Annually after results of Machine Driven Survey are known.</p> <p>This may be undertaken in conjunction with safety inspection</p>
Detailed Visual Inspection	Records measured areas or lengths of more closely defined defects, aggregated within short sub-sections, 20 m in length.	Will generally only be undertaken if required to determine finite details of programmed maintenance projects
Inspection for Regulatory Purposes	<p>The most significant of which involves responsibilities under the New Roads and Streetworks Act.</p> <p>Management of List of Highways</p> <p>Dealing with illegal and unauthorised signs</p> <p>Skip permits, temporary closures and other authorised occupation of the road.</p> <p>Adoption of new roads</p>	<p>See inspection Code of Practice for New Roads and Streetworks Act</p> <p>} }AS }REQUIRED }</p>

3.8.3 Of the above types of service inspections, the following will be used regularly to establish a programme of maintenance :-

3.8.3.1 Machine Driven Survey

In partnership with all other Local Authorities in Scotland a programme that will examine the condition of our roads using a purpose built vehicle will be undertaken. This will not only give us information on the condition of our roads but also give us benchmark comparisons with the other Local Authorities.

The results of the survey are given in the form of three colour codes, (a) green when condition is acceptable, (b) orange when there defects need to be looked at and (c) red when defects are above the set levels.

The software used to view this information will also be used to determine the initial areas of the network that may require attention. Intervention levels can be set to suit the standards acceptable to the Council and to take account of available funding.

3.8.3.2 Coarse Visual Inspections

These will be carried out, by technical staff, on roads that are classified in orange and red categories. They will allow prioritisation of the maintenance works required to match available funding.

3.9 METHODOLOGY OF INSPECTION

3.9.1 Find and Fix

3.9.1.1 This method of inspection will predominantly be used on Minor Roads.

3.9.1.2 The roads squad will travel selected routes at the prescribed frequency and identify defects that exceed the safety intervention levels. They will immediately repair those defects using specified methods. When a section of road has been travelled and repairs carried out a written dated statement from the squad chargehand that 'Road Made Safe' will be completed and recorded.

3.9.1.3 Find and Fix squads will also carry out immediate repairs to minor non-surface safety defects (such as obscured signs, blocked drainage etc.).

3.9.1.4 These repairs will also be recorded. Safety defects unable to be repaired immediately will be temporarily made safe and reported to the Roads Superintendent on the relevant forms.

3.9.2 Qualified Inspector

For all routes other than minor routes the normal mode of inspection will be by trained inspectors who will record all defects and pass the list of required actions to the relevant staff.

3.10 CONDITION STANDARDS

3.10.1 The manner in which the various defects impinge on the key objectives of safety serviceability and sustainability is shown in Table 7 below.

CONDITION OF NETWORK

TABLE 7

Key Objectives	Carriageway	Footway	Drainage	Verges / Trees
Safety	Nature and extent and location of surface defects. Nature and extent of edge defects. Nature and extent of defective surface skidding resistance.	Nature and extent and location of surface defects. Nature and extent of kerb and edging defects.	Accumulation of water on the carriageway and footways. Discharge of water onto carriageway / footway.	Obstruction to user visibility. Falling Branches and Trees. Overhanging branches.
Serviceability	Nature and extent of surface defects. Ride quality of the surface. Noise and vibration	Nature and extent of surface defects. Extent of encroachment of weed growth. The slipperiness of the surface. The quality of the surface. Integrity of the network.	Accumulation of water on the carriageway and footways. Serviceability and integrity of culverts and ditches.	Potential for service disruption.
Sustainability	Nature and extent of surface defects. Nature and extent of pavement defects..	Nature and extent of surface defects.	Inadequate drainage of the road structure will reduce effective life and increase maintenance liability.	Landscape conservation. Bio-diversity. Problems of root growth for surface structure and road drainage.

3.10.2 Each element of the network has been given a defined standard of condition, which is considered necessary to meet the requirements for safety, serviceability, and sustainability. Where it is not possible to meet these standards within the constraints of the available budgets, targets will be set for attaining and sustaining these standards in the long term. These standards will be consistently applied and will be reviewed at intervals in light of changing circumstances.

3.10.3 For full details of Condition Standards to be applied see Appendix 4.

4 MATERIALS AND TREATMENTS

- 4.1 In order to meet the key objectives of Safety, Serviceability and Sustainability, it is important to ensure those materials, treatments and processes used for road maintenance meet consistent standards of quality. The "Specification of Highway Works" will be the main specification document used for this purpose.

Where discretion is allowed in the application of standards it is important not to set any unnecessarily high specification for materials and treatment standards. This will not only increase cost, but may reduce the potential for sustainability. Subject to risk assessment, relaxation of technical standards may be considered where it would bring significant benefits of sustainability.

It is also important to ensure that materials and treatments for any scheme are consistent with the character of the area.

Consideration will be given to recycling of materials whenever the opportunity arises.

5 PROCESSES

5.1 QUALITY MANAGEMENT AND SECTOR SCHEMES

- 5.1.1 The "application of Surface Dressing" and "Safety Barrier repair and replacement" are both subject to quality assurance regimes to ISO 9001 2000 with integrated systems for client and service provider. It is proposed to expand this regime over time to include all of the road service functions.

6 DEPOTS AND MATERIAL STORAGE

- 6.1 Depots and materials storage areas should be managed to mitigate visual intrusion and to avoid pollution in accordance with legal and moral obligations.

7 STREET LIGHTING

- 7.1 Standards for street lighting are generally covered in the specification within the present Street Lighting Maintenance Contract. This contract is due to be reviewed in the near future.
- 7.2 The issue of the condition of lighting columns has been recognised as a major problem and a program of replacement has been established using available capital funding. The present level of funding is insufficient to achieve sustainability and measures will have to be taken to overcome this.

8 MEASURING PERFORMANCE

8.1 CONTINUOUS IMPROVEMENT

In order to demonstrate continuous improvement, performance has to be continually measured and this is undertaken through performance indicators, standards and targets. These are defined as follows: -

Performance Indicator

The measure of performance in exercising a function

Performance Standard

The minimum acceptable levels of performance in the exercise of a function and measured by reference to a performance indicator for that function.

Performance Target

The level of performance in the exercise of a function that is expected to be achieved over a minimum period of a year and measured by reference to a performance indicator for that function.

8.2 METHOD OF MEASURING

Performance can be measured in a number of ways as follows: -

- 8.2.1 Input – the resources (human, material or financial) utilised in delivering the service.
- 8.2.2 Process – the methodology and procedure of committing the resources in pursuit of fulfilling the function.
- 8.2.3 Output – the resultant effect of completing the process with the resource input.
- 8.2.4 Outcome – the ultimate impact on the community and the best way of measuring performance.

8.3 PERFORMANCE INDICATORS

There are national indicators see Appendix 5 and local indicators that are set to reflect local priorities and provide key management information. Table 8 sets out some of the proposed local PI's. These will require ongoing development.

PERFORMANCE INDICATORS AND TARGETS

TABLE 8

PI No.	Objective	Local Performance Indicator	Local Performance Target
LPI 1	To ensure that all defects which present a hazard to road users are identified and dealt with in order that the Council fulfils its statutory obligations with regards to road safety.	% Of Category 1 defects repaired by the end of the next working day.	To respond to all reported category 1 defects by the end of the next working day.
LPI 2	To determine the effect of the Maintenance Plan on the level of reactive maintenance required.	Reactive repairs as % of revenue budget.	To see year on year reduction in % of Revenue budget spent on reactive maintenance.
LPI 3	To determine the effectiveness and robustness of safety inspection regime and level of preventative maintenance carried out.	No. of public liability claims received per 100km of road network	To see a year on year reduction in number of public liability claims.
LPI 4	To determine the effectiveness of the routine maintenance programme.	No. of defects reported during safety inspections	To see a reduction in the number of defects as preventative maintenance is carried out.

8.4 BENCHMARKING

- 8.4.1 Benchmarking will be used to provide a means of comparing our performance with that of others. This will allow us to demonstrate improvement not only by comparison with our peers but also by comparing our current performance with our previous.
- 8.4.2 The main types of Benchmarking which will be used in terms of achieving Best Value are:-

<p><u>Data Benchmarking</u> Involves the use of inputs and or outputs for comparing performance, normally cost or measurement based.</p>	<p>APSE Performance Networks for Highways, Winter and Street Lighting is in use to achieve this and is made up of 40+ local Authorities from throughout the UK</p>
<p><u>Process Benchmarking</u> Is a means of comparing and measuring processes, sequences or activities involved in service delivery with those of an other organisation to identify how existing methods can be improved and best practice adopted.</p>	<p>We are members of the Celtic Benchmarking Club, comprising ourselves, the Roads Authorities of Glasgow, Edinburgh, Stirling, Perth and Kinross, South Ayrshire, West Lothian, Northern Ireland and the Isle of Man. Topics addressed to date include Winter, Construction Consents, St Lighting and Find and Fix.</p>

9 PROGRAMMING AND PRIORITIES

- 9.1 Implementing effective systems for programming and prioritising road maintenance activities is a key part of this plan. The condition standards set out earlier, assume that the level of funding available will be sufficient to maintain these standards. When available funding clearly is not sufficient then re-programming and re-prioritising will become even more critical.
- 9.2 Establishing the various priorities will largely be determined by the outcome of safety and service inspections, assessed against Council policies.
- 9.3 For Routine Maintenance, priorities will be defined for all categories of work. Each category may be undertaken separately according to the frequency defined in each case but it will be more efficient to combine a number of operations into a co-ordinated programme. This will particularly apply to remote rural areas where travel plays a significant part in the operation. This may mean a delay in undertaking some works in order to achieve greater efficiency.
- 9.4 Programmed maintenance is undertaken primarily to provide sustainability of the network. It can also be undertaken for safety reasons e.g. to improve skid resistance. Programmed maintenance schemes are more expensive in the short term, but less expensive in the long term, than reactive treatments. They should minimise whole life cost. The determination of priorities will be objectively based and use accurate condition data. A rolling programme will be drawn up over the life cycle of the maintenance element being considered.

10 WINTER SERVICE OPERATIONAL PLAN

10.1 INTRODUCTION

Argyll & Bute Council has a statutory obligation, under Section 34 of the Roads(Scotland) Act 1984, to "...take such steps as it considers reasonable to, prevent snow and ice endangering the safe passage of pedestrians and vehicles over public roads in the Council area". By definition this includes carriageways, footways, footpaths, pedestrian precincts, etc.

It is the aim of Argyll & Bute Council to provide a service with respect to the above that will :-

1. Ensure the provision of a standard of treatment appropriate to the prevailing weather conditions.
2. Establish patterns of working which will produce the greatest benefit from the deployed resources with the view to reducing the level of risk and the extent of any delays to the public caused by adverse weather conditions.
3. At all times comply with the requirements of the Health & Safety at Work Act 1974.

10.2 WINTER SERVICE OPERATIONAL PLAN

- 10.2.1 The Council will continue to approve, adopt and publish, in consultation with users and stakeholders, through the Director of Operational Services, a Winter Service Operational Plan based on the principles of the Code of Practice for Highway Maintenance.
- 10.2.2 The Operational Plan will define route treatment plans for carriageways, footways and cycleways. The general maintenance hierarchy will be adapted to cater for the specific circumstances of Winter Maintenance.
- 10.2.3 The Operational Plan will be co-ordinated with adjoining Local Authorities and Trunk Roads Operating Companies. Route planning and treatment regimes will be set to meet the road users reasonable expectations of consistency, whilst providing value for money.
- 10.2.4 The Operational Plan will be accompanied by a Procedures Document detailing the methods of management, control, reporting, recording and setting out the resources and areas of treatment required within the Plan.
- 10.2.5 A non-technical summary of the Operational Plan will be distributed to users, stakeholders and for general public consumption. Leaflets defining the four political Council Areas will highlight the plans for treatment, hours of operation and advice on safe use of the network.

10.3 WEATHER FORECASTING AND DETECTION SYSTEMS

The Council will employ a Weather Forecast Provider to give a 24 hour forecast and consultation service. Use will be made of all available technology to enhance the monitoring of weather conditions and control resources effectively.

10.4 SERVICE DELIVERY AND TECHNICAL REVIEWS

Annual reviews will consider the arrangements for the delivery of the Winter Service. Consultations between Council departments and contractors to ensure clear terms of reference for the provision and management of all resources, health and safety and insurance. All vehicles, plant, fuel provision, equipment and maintenance arrangements shall be checked in advance of the winter season to ensure full operational capacity.

10.5 WEATHER AND OTHER EMERGENCIES

10.5.1 There will always be a need to make the highway safe after road accidents, for example dealing with oil spillage's and other damage. Requirements to close sections of the highway due accident or landslide will also involve the setting up of diversionary routes. Although considerable emphasis is given within highway maintenance to dealing with winter conditions, increasingly contingencies are necessary for a wider range of weather hazards. These involve:-

- (a) Flooding
- (b) High Winds
- (c) High Temperatures

10.5.2 Arrangements will be put in place to allow :-

- (a) Planning for and prediction of weather conditions likely to cause hazards.
- (b) The formulation of procedures to mitigate the formation of hazards and alleviate their effect on the use of the network.

10.5.3 Formulation of plans to notify the general public and other stakeholders of hazards causing disruption to the use of the network.

Drawing up of diversionary routes where practicable to redirect network users past hazards which cannot readily be removed.

10.5.4 In all cases when assessing the nature of the hazard, consideration will be given to the health and safety of, not only the network users, but also the Council's employees. It should be noted that in certain circumstances, the forces of nature are such that no safe practicable action may be available.

10.5.5 There are also a wide range of other civil emergencies in which Roads Services may be required to give logistical assistance. In these cases the plans, procedures and responsibilities are set out in the Council's Emergency Plan. The Council Emergency Planning Officer will co-ordinate interdepartmental arrangements and maintain plans drawn up in consultation with the Police and other emergency services.

11 ANNUAL BUDGET PROCESS

11.1 ANNUAL PROCESS

11.1.1 In order to calculate the true cost of maintaining our road network the following factors will be established: -

11.1.2. An inventory of all our assets will be completed/updated.

11.1.3 A condition standard will be set for each of the different road hierarchies including minimum timescales within which work should to be carried out.

11.1.4 A unit rate cost for each element of the work will be calculated annually using rates that can be benchmarked.

- 11.1.5 The average cost, over the preceding 3 financial years, for delivering the reactive services that can not readily be measured i.e. winter, emergencies potholing, patching will be calculated.
- 11.1.6 Formulae have been established for all measurable activities to calculate the total cost for carrying out the work together with an annual cost. These annual costs when added to the cost for delivering the reactive services leads to a total cost for delivering the comprehensive road maintenance service to a set specification. Details of all financial breakdowns are contained in Appendix 5.
- 11.1.7 These calculations will be undertaken annually and when budgets are allocated the effect of any shortfall will be calculated and reported to members.
- 11.1.8 Decisions will then be taken as to what elements of maintenance are curtailed and the effect on the sustainability of the network reported.

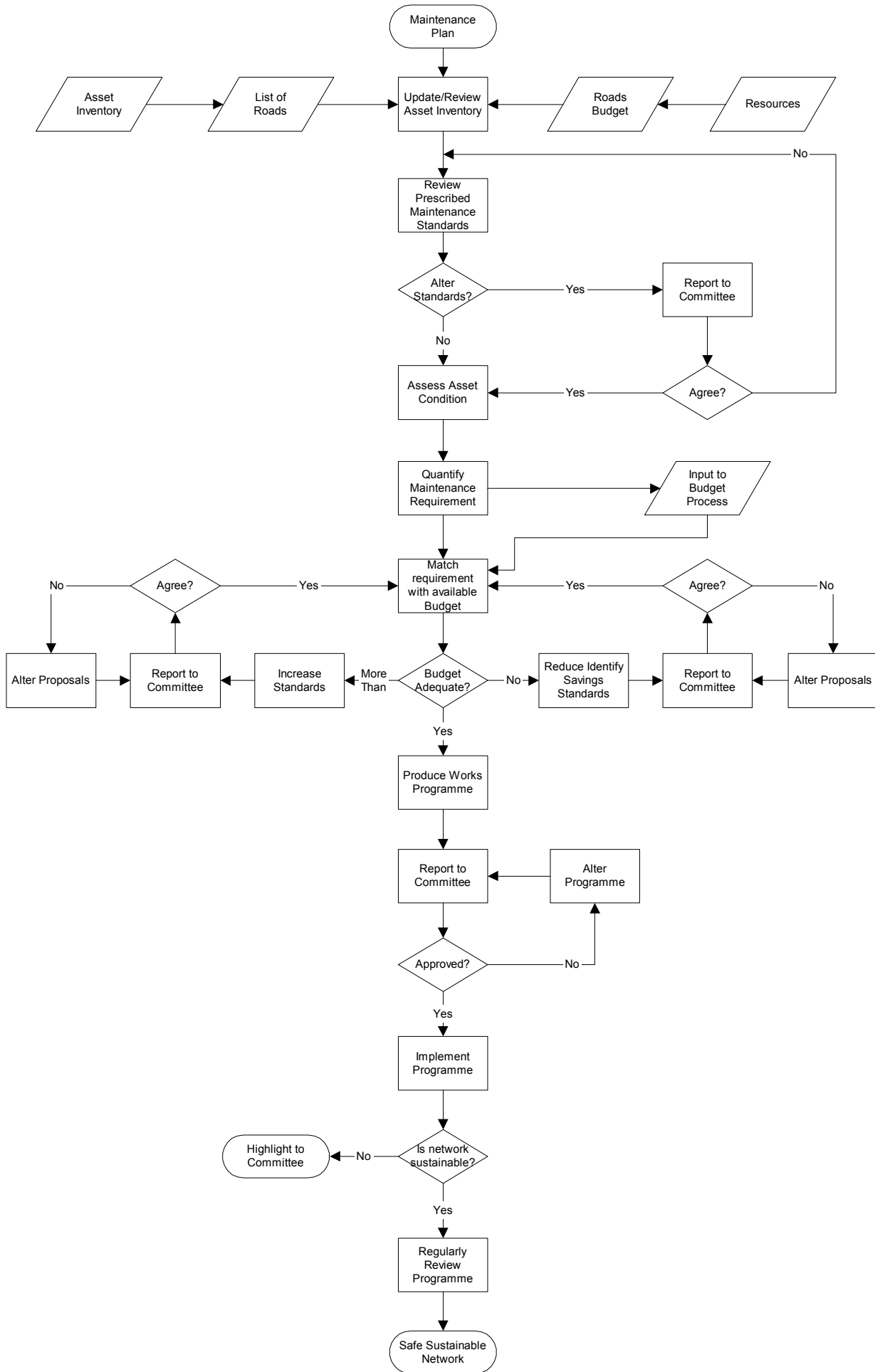
11.2 OVERVIEW PROCESS MAP

See over.

ROADS MAINTENANCE & ASSET MANAGEMENT PLAN FOR THE ROAD NETWORK

OVERVIEW

Process Map 1



Appendix 1

Road Hierarchy

Appendix 1

Area	Sub Area	Town	Prefix 1	Road No	Road Name	Km	Maintenance Hierarchy
MKI	Mid Argyll		A	816	Lochgilphead-Oban Road	27.52	1
MKI	Mid Argyll		A	819	Inveraray - Dalmally Road	10.54	1
MKI	Mid Argyll	Inveraray	A	819	Croitville Road	0.24	1
MKI	Mid Argyll	Kilmartin	A	816	Lochgilphead-Oban Road	0.79	1
MKI	Mid Argyll	Lochgilphead	A	816	Lochgilphead-Oban Road	0.65	1
MKI	Mid Argyll	Ardrishaig	U	49	East Bank Road	0.34	2a
MKI	Mid Argyll	Ardrishaig	U	46	Kilduskland Road	0.76	2a
MKI	Mid Argyll	Ardrishaig	U	71	Park Road (Glenfyne Park Access Road)	0.43	2a
MKI	Mid Argyll	Furnace	U	64	Quarry Park Housing Scheme Road	0.03	2a
MKI	Mid Argyll	Lochgilphead	C	37	Manse Brae (part) and Hospital Road, Lochgilphead	1.08	2a
MKI	Mid Argyll	Lochgilphead	C	62	Lochgilphead Loop Road	1.05	2a
MKI	Mid Argyll	Lochgilphead	U	73	Kilmory Industrial Estate Road	0.69	2a
MKI	Mid Argyll	Lochgilphead	U	8	Manse Brae	0.61	2a
MKI	Mid Argyll		U	33	Ardpatrick Ferry Road	1.67	3
MKI	Mid Argyll		C	41	Danna Road	2.25	3
MKI	Mid Argyll		C	42	Barnluasagan - Kilmory Knap Road	19.73	3
MKI	Mid Argyll		U	10	Auchendrain - Brenachaille Road	1.54	3
MKI	Mid Argyll		U	14	Cairnbaan Back Road	0.37	3
MKI	Mid Argyll		U	18	Drimvore - Crinan Ferry Road	5.63	3
MKI	Mid Argyll		U	19	Rhudle Road	0.32	3
MKI	Mid Argyll		U	20	Slockavuillin Road	1.21	3
MKI	Mid Argyll		U	21	Slockavuillin Smithy Road	0.90	3
MKI	Mid Argyll		C	40	Tayvallich-Carsaig Road	0.55	3
MKI	Mid Argyll		B	8002	Ardfern to pier	6.46	3
MKI	Mid Argyll		U	25	Inverlussa Hill Road	0.64	3
MKI	Mid Argyll		U	38	Barsloisnach Road	1.77	3
MKI	Mid Argyll		U	51	Silvercraigs Road	0.77	3
MKI	Mid Argyll		U	53	Clachandubh road	0.87	3
MKI	Mid Argyll		U	57	Lochgair Village Road	0.35	3
MKI	Mid Argyll		U	65	Ballibeg Road	0.29	3
MKI	Mid Argyll		U	29	Achahoish - Ellary Road	6.31	3
MKI	Mid Argyll		U	31	Taynish Road	1.53	3
MKI	Mid Argyll		C	23	Glenakil Road	0.48	3
MKI	Mid Argyll		B	8025	Crinan Moss-Keills Road	19.34	3
MKI	Mid Argyll		B	8024	Ormsary to A83 at Tarbert	34.60	3
MKI	Mid Argyll		B	840	East Lochaweside Road	14.64	3
MKI	Mid Argyll		C	30	Ford-Kilmaha-Barnaline Road	8.85	3
MKI	Mid Argyll		C	38	Kilmichael Glen Road	12.01	3
MKI	Mid Argyll		U	24	Barrananaoil Road	2.66	3
MKI	Mid Argyll		U	23	Ardlarach Road	0.55	3
MKI	Mid Argyll	Achnamara	C	42	Barnluasagan-Kilmory Knap Road	0.38	3
MKI	Mid Argyll	Cairnbaan	U	48	Crinan Canal Towpath Road, Cairnbaan	0.97	3

Area	Sub Area	Town	Prefix 1	Road No	Road Name	Km	Maintenance Hierarchy
MKI	Mid Argyll	Crinan	U	47	Crinan Hotel Loop Road	0.85	3
MKI	Mid Argyll	Crinan	U	69	Crinan Housing Scheme Road	0.08	3
MKI	Mid Argyll	Crinan	C	39	Crinan Harbour and Hotel Road	2.01	3
MKI	Mid Argyll	Ford	U	78	Balure Housing Scheme Road	0.16	3
MKI	Mid Argyll	Furnace	U	52	Furnace Loop Road	0.24	3
MKI	Mid Argyll	Furnace	U	55	Queen Elizabeth Cottages	0.16	3
MKI	Mid Argyll	Furnace	C	36	Furnace Side Road	0.55	3
MKI	Mid Argyll	Kilmartin	U	44	Long Walk, Kilmartin	1.16	3
MKI	Mid Argyll	Kilmichael	U	75	Dalriada Place, Bridgend	0.07	3
MKI	Mid Argyll	Lochgair	U	66	Upper Lochgair Housing Scheme Road	0.14	3
MKI	Mid Argyll	Tayvallich	U	31	Taynish Road	0.40	3
MKI	Mid Argyll		B	8002	A816 to Ardfern	1.50	2
MKI	Mid Argyll		B	841	Cairnbaan - Crinan Road	6.92	2
MKI	Mid Argyll		B	8025	Crinan to Tayvallich	5.00	2
MKI	Mid Argyll		B	8024	A83 to Ormsary	14.00	2
MKI	Mid Argyll		U	43	Am Baile Mor Housing Scheme Road	0.19	3a
MKI	Mid Argyll		U	67	Cairnbaan Housing Scheme Road	0.21	3a
MKI	Mid Argyll		U	74	Achahoish Housing Scheme Road (Ionad Shomhairle)	0.07	3a
MKI	Mid Argyll	Ardfern	B	8002	Ardfern Road	0.89	3a
MKI	Mid Argyll	Ardfern	U	23	Ardlarach Road	0.34	3a
MKI	Mid Argyll	Ardrishaig	U	56	Darroch Road	0.11	3a
MKI	Mid Argyll	Ardrishaig	U	54	Glenfyne Park Housing Scheme Roads	0.63	3a
MKI	Mid Argyll	Ardrishaig	U	80	Linnet Court	0.06	3a
MKI	Mid Argyll	Ardrishaig	U	50	West Bank Road	0.79	3a
MKI	Mid Argyll	Ardrishaig	U	41	Glenfyne Crescent Housing Scheme Road	0.14	3a
MKI	Mid Argyll	Ardrishaig	U	60	Seaside Park Housing Scheme Road	0.13	3a
MKI	Mid Argyll	Ardrishaig	C	43	Ardrishaig Back Roads	1.11	3a
MKI	Mid Argyll	Ardrishaig	U	62	Upper Glenfyne Park Housing Scheme Road	0.45	3a
MKI	Mid Argyll	Ardrishaig	U	59	Hillview Terrace Housing Scheme Road	0.19	3a
MKI	Mid Argyll	Ardrishaig	U	77	Glengilp Road	0.30	3a
MKI	Mid Argyll	Ardrishaig	U	81	Columba Road	0.10	3a
MKI	Mid Argyll	Cairnbaan	U	76	Piper's Road, Cairnbaan	0.16	3a
MKI	Mid Argyll	Cairnbaan	U	79	Creag Ghlas	0.13	3a
MKI	Mid Argyll	Furnace	U	42	Redwell Park Housing Scheme Road	0.08	3a
MKI	Mid Argyll	Inveraray	U	15	Glen Aray View	0.15	3a
MKI	Mid Argyll	Inveraray	U	4	Sinclair Drive	0.16	3a
MKI	Mid Argyll	Inveraray	C	65	Pierhead Road	0.06	3a
MKI	Mid Argyll	Inveraray	U	1	Barnbrae Road	0.11	3a
MKI	Mid Argyll	Inveraray	U	12	Riochan	0.09	3a
MKI	Mid Argyll	Inveraray	U	2	Barn Park	0.29	3a
MKI	Mid Argyll	Inveraray	U	3	The Avenue	0.23	3a

Area	Sub Area	Town	Prefix 1	Road No	Road Name	Km	Maintenance Hierarchy
MKI	Mid Argyll	Crinan	U	47	Crinan Hotel Loop Road	0.85	3
MKI	Mid Argyll	Crinan	U	69	Crinan Housing Scheme Road	0.08	3
MKI	Mid Argyll	Crinan	C	39	Crinan Harbour and Hotel Road	2.01	3
MKI	Mid Argyll	Ford	U	78	Balure Housing Scheme Road	0.16	3
MKI	Mid Argyll	Furnace	U	52	Furnace Loop Road	0.24	3
MKI	Mid Argyll	Furnace	U	55	Queen Elizabeth Cottages	0.16	3
MKI	Mid Argyll	Furnace	C	36	Furnace Side Road	0.55	3
MKI	Mid Argyll	Kilmartin	U	44	Long Walk, Kilmartin	1.16	3
MKI	Mid Argyll	Kilmichael	U	75	Dalriada Place, Bridgend	0.07	3
MKI	Mid Argyll	Lochgair	U	66	Upper Lochgair Housing Scheme Road	0.14	3
MKI	Mid Argyll	Tayvallich	U	31	Taynish Road	0.40	3
MKI	Mid Argyll		B	8002	A816 to Ardfern	1.50	2
MKI	Mid Argyll		B	841	Cairnbaan - Crinan Road	6.92	2
MKI	Mid Argyll		B	8025	Crinan to Tayvallich	5.00	2
MKI	Mid Argyll		B	8024	A83 to Ormsary	14.00	2
MKI	Mid Argyll		U	43	Am Baile Mor Housing Scheme Road	0.19	3a
MKI	Mid Argyll		U	67	Cairnbaan Housing Scheme Road	0.21	3a
MKI	Mid Argyll		U	74	Achahoish Housing Scheme Road (Ionad Shomhairle)	0.07	3a
MKI	Mid Argyll	Ardfern	B	8002	Ardfern Road	0.89	3a
MKI	Mid Argyll	Ardfern	U	23	Ardlarach Road	0.34	3a
MKI	Mid Argyll	Ardrishaig	U	56	Darroch Road	0.11	3a
MKI	Mid Argyll	Ardrishaig	U	54	Glenfyne Park Housing Scheme Roads	0.63	3a
MKI	Mid Argyll	Ardrishaig	U	80	Linnet Court	0.06	3a
MKI	Mid Argyll	Ardrishaig	U	50	West Bank Road	0.79	3a
MKI	Mid Argyll	Ardrishaig	U	41	Glenfyne Crescent Housing Scheme Road	0.14	3a
MKI	Mid Argyll	Ardrishaig	U	60	Seaside Park Housing Scheme Road	0.13	3a
MKI	Mid Argyll	Ardrishaig	C	43	Ardrishaig Back Roads	1.11	3a
MKI	Mid Argyll	Ardrishaig	U	62	Upper Glenfyne Park Housing Scheme Road	0.45	3a
MKI	Mid Argyll	Ardrishaig	U	59	Hillview Terrace Housing Scheme Road	0.19	3a
MKI	Mid Argyll	Ardrishaig	U	77	Glengilp Road	0.30	3a
MKI	Mid Argyll	Ardrishaig	U	81	Columba Road	0.10	3a
MKI	Mid Argyll	Cairnbaan	U	76	Piper's Road, Cairnbaan	0.16	3a
MKI	Mid Argyll	Cairnbaan	U	79	Creag Ghlas	0.13	3a
MKI	Mid Argyll	Furnace	U	42	Redwell Park Housing Scheme Road	0.08	3a
MKI	Mid Argyll	Inveraray	U	15	Glen Aray View	0.15	3a
MKI	Mid Argyll	Inveraray	U	4	Sinclair Drive	0.16	3a
MKI	Mid Argyll	Inveraray	C	65	Pierhead Road	0.06	3a
MKI	Mid Argyll	Inveraray	U	1	Barnbrae Road	0.11	3a
MKI	Mid Argyll	Inveraray	U	12	Riochan	0.09	3a
MKI	Mid Argyll	Inveraray	U	2	Barn Park	0.29	3a
MKI	Mid Argyll	Inveraray	U	3	The Avenue	0.23	3a

Area	Sub Area	Town	Prefix 1	Road No	Road Name	Km	Maintenance Hierarchy
MKI	Mid Argyll	Inveraray	U	13	Upper Riochan	0.24	3a
MKI	Mid Argyll	Inveraray	U	11	Argyll Court	0.03	3a
MKI	Mid Argyll	Inveraray	U	10	Church Square	0.03	3a
MKI	Mid Argyll	Inveraray	U	9	Ferryland	0.21	3a
MKI	Mid Argyll	Inveraray	U	8	Fisher Row	0.16	3a
MKI	Mid Argyll	Inveraray	U	7	Arkland	0.03	3a
MKI	Mid Argyll	Inveraray	U	6	Cross Houses	0.03	3a
MKI	Mid Argyll	Inveraray	U	5	Foulis Road	0.14	3a
MKI	Mid Argyll	Inveraray	U	41	Higher Riochan	0.09	3a
MKI	Mid Argyll	Lochgilphead	U	13	Monydrain Road	0.76	3a
MKI	Mid Argyll	Lochgilphead	U	27	Ardpatrick Place	0.10	3a
MKI	Mid Argyll	Lochgilphead	U	26	Dun Mor Avenue	0.29	3a
MKI	Mid Argyll	Lochgilphead	U	25	Lorne Street Car Park Access Road	0.04	3a
MKI	Mid Argyll	Lochgilphead	U	24	MacIntyre Terrace	0.23	3a
MKI	Mid Argyll	Lochgilphead	C	67	Lorne Street	0.00	3a
MKI	Mid Argyll	Lochgilphead	U	22	Fernoch Drive	0.29	3a
MKI	Mid Argyll	Lochgilphead	U	23	Fernoch Park	0.45	3a
MKI	Mid Argyll	Lochgilphead	U	28	Wilson Road	0.27	3a
MKI	Mid Argyll	Lochgilphead	U	29	Duntrune Place	0.09	3a
MKI	Mid Argyll	Lochgilphead	U	30	Dunadd Place	0.06	3a
MKI	Mid Argyll	Lochgilphead	U	31	Carnasserie Place	0.07	3a
MKI	Mid Argyll	Lochgilphead	U	32	Craignish Place	0.03	3a
MKI	Mid Argyll	Lochgilphead	U	61	High Bank Park Housing Scheme Road	0.53	3a
MKI	Mid Argyll	Lochgilphead	U	68	Kilmory Road (See No 5)	0.00	3a
MKI	Mid Argyll	Lochgilphead	U	72	High Bank Park Industrial Estate Road	0.11	3a
MKI	Mid Argyll	Lochgilphead	U	6	MacDonald Terrace	0.22	3a
MKI	Mid Argyll	Lochgilphead	U	36	Whitegates Court	0.13	3a
MKI	Mid Argyll	Lochgilphead	C	67	Lorne Park	0.35	3a
MKI	Mid Argyll	Lochgilphead	U	1	Brodie Crescent	0.37	3a
MKI	Mid Argyll	Lochgilphead	U	2	Campbell Street	0.13	3a
MKI	Mid Argyll	Lochgilphead	U	3	Cossack street	0.05	3a
MKI	Mid Argyll	Lochgilphead	U	4	Dewar Avenue	0.24	3a
MKI	Mid Argyll	Lochgilphead	U	15	Lorne Lane (Smiddy Lane)	0.11	3a
MKI	Mid Argyll	Lochgilphead	U	5	Kilmory Road	0.77	3a
MKI	Mid Argyll	Lochgilphead	U	13	Whitegates Road	0.84	3a
MKI	Mid Argyll	Lochgilphead	U	14	MacBrayne's Lane	0.08	3a
MKI	Mid Argyll	Lochgilphead	U	7	Lorne Street (part)(Bank Park)	0.10	3a
MKI	Mid Argyll	Lochgilphead	U	12	Union Street	0.32	3a
MKI	Mid Argyll	Lochgilphead	U	11	Stag Park	0.23	3a
MKI	Mid Argyll	Lochgilphead	U	10	Sinclair Drive	0.10	3a
MKI	Mid Argyll	Lochgilphead	U	9	Rowan Park	0.05	3a
MKI	Mid Argyll	Lochgilphead	U	16	Willow Brae Road	0.06	3a
MKI	Mid Argyll	Minard	U	70	Mansefield Road	0.13	3a
MKI	Mid Argyll	Minard	U	58	Auchgoyle Housing Scheme Road	0.29	3a
MKI	Mid Argyll	Tayvallich	B	8025	Crinan Moss-Keills Road	1.24	3a
MKI	Mid Argyll	Tayvallich	C	40	Tayvallich-Carsaig Road	0.66	3a

Area	Sub Area	Town	Prefix 1	Road No	Road Name	Km	Maintenance Hierarchy
MKI	Kintyre		A	83	Kennacraig to Campbeltown	53.20	1
MKI	Kintyre	Campbeltown	A	83	Lochgilthead-Campbeltown Road	1.35	1
MKI	Kintyre	Muasdale	A	83	Lochgilthead-Campbeltown Road	1.08	1
MKI	Kintyre		B	843	Machrihanish Road	5.84	2
MKI	Kintyre		B	879	Carradale Pier Road	1.54	2
MKI	Kintyre		C	21	Tayinloan Ferry Road	1.08	2
MKI	Kintyre		B	842	Carradale to Campbeltown	21.50	2
MKI	Kintyre		U	59	R.A.F. Machrihanish Road	3.75	2
MKI	Kintyre		B	8001	Redhouse to Cloanaig	8.17	2
MKI	Kintyre	Campbeltown	U	54	Snipefield Industrial Estate	0.21	2a
MKI	Kintyre	Campbeltown	B	842	East Side-Southend Road	2.78	2a
MKI	Kintyre	Campbeltown	C	19	New Quay Street (part of)	0.00	2a
MKI	Kintyre	Campbeltown	C	64	Dalruan Street	0.72	2a
MKI	Kintyre	Campbeltown	C	64	High Street	0.00	2a
MKI	Kintyre	Campbeltown	C	19	Hall Street	1.79	2a
MKI	Kintyre	Campbeltown	U	70	Hospital Road	0.11	2a
MKI	Kintyre	Campbeltown	U	30	Kinloch Road	0.33	2a
MKI	Kintyre	Campbeltown	U	41	New Quay Street (part)	0.00	2a
MKI	Kintyre	Campbeltown	U	42	Old Quay	0.24	2a
MKI	Kintyre	Campbeltown	U	43	Old Quay Street (Head)	0.04	2a
MKI	Kintyre	Campbeltown	U	34	Lochend Street	0.21	2a
MKI	Kintyre	Campbeltown	U	11	Castlehill	0.20	2a
MKI	Kintyre	Carradale	B	879	Carradale Pier Road	0.95	2a
MKI	Kintyre	Machrihanish	B	843	Machrihanish Road	1.07	2a
MKI	Kintyre	Peninver	B	842	East Side-Southend Road	1.09	2a
MKI	Kintyre	Tarbert	U	61	Tarbert Industrial Estate Road	0.24	2a
MKI	Kintyre	Tarbert	A	8015	Tarbert Pier Road	1.17	2a
MKI	Kintyre		U	17	Gobagrennan Road	8.51	3
MKI	Kintyre		C	18	Southend-Keprigan Road	6.47	3
MKI	Kintyre		C	19	Campbeltown-Polliwilline-Machriemore Road	18.65	3
MKI	Kintyre		C	59	Clachan Loop Road	2.61	3
MKI	Kintyre		U	6	Skipness Pier Road	3.09	3
MKI	Kintyre		U	9	Carskey Road	2.11	3
MKI	Kintyre		U	10	Glenbreackrie Road	11.06	3
MKI	Kintyre		U	11	Knocknaha Road	0.21	3
MKI	Kintyre		U	13	Macharioch Branch Road	4.28	3
MKI	Kintyre		B	842	Carradale to Cloanaig	36.18	3
MKI	Kintyre		U	16	Lossit-Ballygroggan Road	1.93	3
MKI	Kintyre		C	20	Barr Glen Road	5.79	3
MKI	Kintyre		U	18	Tangy Mill Road	3.96	3
MKI	Kintyre		U	21	Chleit Branch Road	0.13	3
MKI	Kintyre		U	23	Portachoillean Ferry Road	2.25	3
MKI	Kintyre		U	38	Moss Road	3.98	3
MKI	Kintyre		U	39	Carrick View Cottages Road	0.18	3
MKI	Kintyre		U	43	Moy Road	0.64	3
MKI	Kintyre		U	51	Mull of Kintyre Lighthouse Road	7.10	3

Area	Sub Area	Town	Prefix 1	Road No	Road Name	Km	Maintenance Hierarchy
MKI	Kintyre		U	58	Killeonan Road	0.61	3
MKI	Kintyre		U	15	Drumlemble School Road	0.27	3
MKI	Kintyre		B	8001	Cloanaig to Skipness	3.50	3
MKI	Kintyre		U	52	Ferry Road	0.80	3
MKI	Kintyre		C	22	Gigha Road	8.95	3
MKI	Kintyre		C	23	Glenakill Road	0.16	3
MKI	Kintyre		B	8026	West Loch Pier Road	0.82	3
MKI	Kintyre	Campbeltown	U	41	New Quay	0.29	3
MKI	Kintyre		U	40	Portrigh Road, Carradale	0.65	3a
MKI	Kintyre		U	42	Waterfoot Road, Carradale	0.58	3a
MKI	Kintyre		U	56	Whitehouse Village Loop Road	0.29	3a
MKI	Kintyre	Campbeltown	C	19	Kilkerran Road	0.00	3a
MKI	Kintyre	Campbeltown	U	53	Smith Drive	0.56	3a
MKI	Kintyre	Campbeltown	U	52	Shore Street	0.26	3a
MKI	Kintyre	Campbeltown	U	51	Saddell Street	0.19	3a
MKI	Kintyre	Campbeltown	U	50	Roading	0.63	3a
MKI	Kintyre	Campbeltown	U	49	Range Road	0.14	3a
MKI	Kintyre	Campbeltown	U	55	Stewart Road	0.22	3a
MKI	Kintyre	Campbeltown	U	59	Woodlands Drive	0.26	3a
MKI	Kintyre	Campbeltown	U	1	Albyn Avenue	0.33	3a
MKI	Kintyre	Campbeltown	U	2	Ardnacraig Avenue	0.49	3a
MKI	Kintyre	Campbeltown	U	3	Low Askomil	1.26	3a
MKI	Kintyre	Campbeltown	U	65	Bengullion Road	0.16	3a
MKI	Kintyre	Campbeltown	C	19	Argyll Street (and part of New Quay Street)	0.39	3a
MKI	Kintyre	Campbeltown	U	71	Hazelbank Court	0.07	3a
MKI	Kintyre	Campbeltown	U	4	Battery Terrace	0.09	3a
MKI	Kintyre	Campbeltown	U	69	Meadows Park	0.19	3a
MKI	Kintyre	Campbeltown	U	68	Summerhill Crescent	0.21	3a
MKI	Kintyre	Campbeltown	U	57	Tomaig Road	1.58	3a
MKI	Kintyre	Campbeltown	U	56	St John Street	0.21	3a
MKI	Kintyre	Campbeltown	U	64	Kintyre Gardens	0.24	3a
MKI	Kintyre	Campbeltown	U	63	Stronvaar Road	0.22	3a
MKI	Kintyre	Campbeltown	U	62	Dell Lane	0.05	3a
MKI	Kintyre	Campbeltown	U	61	Bellfield Lane	0.07	3a
MKI	Kintyre	Campbeltown	U	60	Diamond Vault	0.11	3a
MKI	Kintyre	Campbeltown	U	58	Union Street	0.08	3a
MKI	Kintyre	Campbeltown	U	67	Knockscalbert Way	0.35	3a
MKI	Kintyre	Campbeltown	U	36	Meadows Avenue	0.48	3a
MKI	Kintyre	Campbeltown	U	22	Glebe Street	0.63	3a
MKI	Kintyre	Campbeltown	U	23	Glengyle Road	0.12	3a
MKI	Kintyre	Campbeltown	U	24	Glenside	0.08	3a
MKI	Kintyre	Campbeltown	U	5	Benmore Street	0.08	3a
MKI	Kintyre	Campbeltown	U	26	Hillside Road	0.29	3a
MKI	Kintyre	Campbeltown	U	28	John Street	0.20	3a
MKI	Kintyre	Campbeltown	U	29	Keith Crescent (Fort Argyll)	0.22	3a
MKI	Kintyre	Campbeltown	U	31	Kirk Street	0.27	3a

Area	Sub Area	Town	Prefix 1	Road No	Road Name	Km	Maintenance Hierarchy
MKI	Kintyre	Campbeltown	U	32	Lady Mary Row	0.26	3a
MKI	Kintyre	Campbeltown	U	33	Limecraigs Road	0.50	3a
MKI	Kintyre	Campbeltown	U	21	Gallowhill Road	0.12	3a
MKI	Kintyre	Campbeltown	U	35	MacCallum Street	0.09	3a
MKI	Kintyre	Campbeltown	U	25	Harvey's Lane	0.04	3a
MKI	Kintyre	Campbeltown	U	37	Milknowe Service Road	0.24	3a
MKI	Kintyre	Campbeltown	U	38	Miller's Park	0.11	3a
MKI	Kintyre	Campbeltown	U	39	Mill Street	0.21	3a
MKI	Kintyre	Campbeltown	U	40	North Shore Street	0.20	3a
MKI	Kintyre	Campbeltown	U	44	Park Square	0.06	3a
MKI	Kintyre	Campbeltown	U	45	Princess Street	0.17	3a
MKI	Kintyre	Campbeltown	U	46	Princess Street Walk	0.09	3a
MKI	Kintyre	Campbeltown	U	47	Queen Street	0.10	3a
MKI	Kintyre	Campbeltown	U	48	Ralston Road	1.02	3a
MKI	Kintyre	Campbeltown	U	10	Castleacres	0.16	3a
MKI	Kintyre	Campbeltown	U	16	Dalintober (or George Street Walk)	0.07	3a
MKI	Kintyre	Campbeltown	U	15	Crosshill Avenue	0.50	3a
MKI	Kintyre	Campbeltown	U	14	Cross Street	0.07	3a
MKI	Kintyre	Campbeltown	U	13	Craigowan Park	0.11	3a
MKI	Kintyre	Campbeltown	U	20	Fisher Row	0.05	3a
MKI	Kintyre	Campbeltown	U	17	Davaar Avenue	0.80	3a
MKI	Kintyre	Campbeltown	U	27	Hutcheon Road	0.09	3a
MKI	Kintyre	Campbeltown	U	12	Castlepark	0.08	3a
MKI	Kintyre	Campbeltown	U	9	Hillside Brae	0.00	3a
MKI	Kintyre	Campbeltown	U	9	Calton Avenue	0.38	3a
MKI	Kintyre	Campbeltown	U	8	Burnbank Place	0.00	3a
MKI	Kintyre	Campbeltown	U	8	Burnside Street	0.25	3a
MKI	Kintyre	Campbeltown	U	7	Broad Street	0.16	3a
MKI	Kintyre	Campbeltown	U	6	Bolgam Street	0.09	3a
MKI	Kintyre	Campbeltown	U	19	Drumore Gardens	0.10	3a
MKI	Kintyre	Campbeltown	U	18	Dell Road	0.19	3a
MKI	Kintyre	Carradale	U	40	Portrigh Road	0.16	3a
MKI	Kintyre	Carradale	U	41	Lochpark Road	0.45	3a
MKI	Kintyre	Carradale	U	30	Broomfield	0.23	3a
MKI	Kintyre	Carradale	U	30	Tormhor	0.21	3a
MKI	Kintyre	Carradale	U	30	Woodside Cottages	0.10	3a
MKI	Kintyre	Carradale	U	28	Shore Road	0.74	3a
MKI	Kintyre	Clachan	U	57	Long Rigg Housing Scheme Road, Clachan	0.14	3a
MKI	Kintyre	Drumlemble	U	49	Burnbank Housing Scheme Road	0.08	3a
MKI	Kintyre	Drumlemble	U	31	Rhudal Cottages Housing Scheme Road	0.21	3a
MKI	Kintyre	Glenbarr	U	44	Glenbarr Housing Scheme Road	0.08	3a
MKI	Kintyre	Kilchenzie	U	45	Wellpark Housing Scheme Road	0.14	3a
MKI	Kintyre	Machrihanish	U	55	Isleview Housing Scheme Road	0.10	3a
MKI	Kintyre	Machrihanish	U	32	Bayview Housing Scheme Roads	0.39	3a
MKI	Kintyre	Muasdale	U	33	Muasdale Housing Scheme Road	0.18	3a
MKI	Kintyre	Peninver	U	46	Sealand Housing Scheme Road	0.13	3a

Area	Sub Area	Town	Prefix 1	Road No	Road Name	Km	Maintenance Hierarchy
MKI	Kintyre	Peninver	U	60	New Peninver Private Housing Scheme Road	0.19	3a
MKI	Kintyre	Saddell	U	47	Miller's Park Housing Scheme Road, Saddell	0.13	3a
MKI	Kintyre	Southend	U	53	Mill Park Housing Scheme Road	0.10	3a
MKI	Kintyre	Southend	U	50	Wallace Cottages Housing Scheme Roads	0.21	3a
MKI	Kintyre	Stewarton	U	34	Burnside Cottages Housing Scheme Road	0.56	3a
MKI	Kintyre	Tarbert	U	29	Castle Street (Tarbert Side Streets)	0.06	3a
MKI	Kintyre	Tarbert	U	29	Kintyre Street (Tarbert Side Streets)	0.10	3a
MKI	Kintyre	Tarbert	U	29	Kintyre Place (Tarbert Side Streets)	0.02	3a
MKI	Kintyre	Tarbert	U	29	Brunswick Street (Tarbert Side Streets)	0.07	3a
MKI	Kintyre	Tarbert	U	29	Back Street (Tarbert Side Streets)	0.13	3a
MKI	Kintyre	Tarbert	U	29	Church Street (Tarbert Side Streets)	0.07	3a
MKI	Kintyre	Tarbert	U	62	Market Place	0.11	3a
MKI	Kintyre	Tarbert	U	54	Brucehill Housing Scheme Road	0.24	3a
MKI	Kintyre	Tarbert	U	45	Lady Ileene Road	0.64	3a
MKI	Kintyre	Tarbert	U	40	Shore Road (Garvel Road)	0.55	3a
MKI	Kintyre	Tarbert	U	36	Drill Hall Housing Scheme Road	0.08	3a
MKI	Kintyre	Tarbert	U	26	Battery Road	0.61	3a
MKI	Kintyre	Tarbert	U	25	School Road and Eastfield Housing Scheme Roads	0.51	3a
MKI	Kintyre	Tarbert	U	37	Croftpark and Glenfield Housing Scheme Roads	0.76	3a
MKI	Kintyre	Tayinloan	U	48	Tayinloan Housing Scheme Road	0.37	3a
MKI	Jura		A	846	Feolin to Craighouse	13.00	2
MKI	Islay		A	846	Port Askaig - Ardbeg Road (Part)	34.09	1
MKI	Islay		A	847	Bridgend - Portnahaven Road	20.22	2
MKI	Islay		B	8016	Port Ellen High Road	14.38	2
MKI	Islay		U	33	Carnain - Coullabus Road	4.83	3
MKI	Islay		U	40	Lochgorm Road	1.90	3
MKI	Islay		U	14	Scarrabus Road	2.78	3
MKI	Islay		U	21	Big Strand Road	1.42	3
MKI	Islay		U	22	Glenegadale Road	1.64	3
MKI	Islay		U	23	Duich Lots Road	1.03	3
MKI	Islay		U	24	Avenvogie - Cluanach Road	4.83	3
MKI	Islay		U	25	Kintra Road	3.78	3
MKI	Islay		U	72	Imeraval Road	1.27	3
MKI	Islay		U	26	Kilnaughton Churchyard Road	0.43	3
MKI	Islay		U	11	Mulreesh Road	1.69	3
MKI	Islay		U	32	Kildalton Churchyard Road	0.42	3
MKI	Islay		U	10	Ardnahoe - Bunnahabhain Road	6.16	3
MKI	Islay		U	34	Killinallan Road	4.99	3
MKI	Islay		U	35	Ardnave Road	5.12	3
MKI	Islay		U	37	Tynacoille Road	0.89	3
MKI	Islay		U	39	Kilchoman Church Road	1.53	3
MKI	Islay		U	64	Caolila Road	1.01	3

Area	Sub Area	Town	Prefix 1	Road No	Road Name	Km	Maintenance Hierarchy
MKI	Islay		U	49	Claddach Road	2.93	3
MKI	Islay		U	44	Octofad - Kelsay Road	3.41	3
MKI	Islay		U	42	Portnahaven - Kilchearan Road	11.59	3
MKI	Islay		U	41	Conisby Road	0.74	3
MKI	Islay		U	31	Brahunisary Loop Road	2.78	3
MKI	Jura		A	846	North of Craighouse	24.90	3
MKI	Islay		U	73	Glenegedale Industrial Estate Road	0.41	3
MKI	Jura		U	59	Ardlussa - Barnhill Road	6.10	3
MKI	Jura		U	58	Keills Road	0.40	3
MKI	Jura		U	57	Ardlussa - Inverlussa Road	1.21	3
MKI	Islay		U	13	Balemartin Road	1.34	3
MKI	Jura		U	47	Knockrome - Ardfernal Road	2.16	3
MKI	Islay		B	8017	Blackrock - Grulinmore Road	8.95	3
MKI	Islay		B	8018	Kentraw - Sanaigmore Road	10.22	3
MKI	Islay		C	12	Glen Road	13.42	3
MKI	Islay		C	13	Bowmore - Laggan Bridge Road (Cruach Road)	4.06	3
MKI	Islay		C	14	Ardbeg - Ardtalla Road	10.43	3
MKI	Islay		C	15	Sunderland - Machir - Ballinaby Road	9.88	3
MKI	Islay		C	16	Port Charlotte - Kilchiaran Road	5.39	3
MKI	Islay		C	17	Port Ellen - Mull of Oa Road	10.15	3
MKI	Jura		U	56	Lussagiven - Ardlussa Road	1.53	3
MKI	Islay	Ballygrant	A	846	Port Askaig-Ardbeg Road (Part)	1.44	2a
MKI	Islay	Bowmore	A	846	Port Askaig - Ardbeg Road (Part)	1.81	2a
MKI	Islay	Bowmore	U	17	Jamieson Street	0.24	2a
MKI	Islay	Bowmore	U	51	School Lane	0.08	2a
MKI	Islay	Bowmore	U	15	School Street	0.23	2a
MKI	Islay	Bruichladdich	A	847	Bridgend - Portnahaven Road	1.05	2a
MKI	Islay	Keills	A	846	Port Askaig-Ardbeg Road (Part)	0.80	2a
MKI	Islay	Port Charlotte	A	847	Bridgend - Portnahaven Road	1.38	2a
MKI	Islay	Port Ellen	U	28	School Street	0.23	2a
MKI	Islay	Port Ellen	A	846	Port Askaig - Ardbeg Road (Part)	1.58	2a
MKI	Islay	Portnahaven/Port Wemyss	A	847	Bridgend - Portnahaven Road	0.68	2a
MKI	Islay	Ballygrant	U	70	Gartness Housing Scheme Road	0.10	3a
MKI	Islay	Ballygrant	C	12	Glen Road	0.10	3a
MKI	Islay	Bowmore	U	16	Flora Street	0.27	3a
MKI	Islay	Bowmore	U	18	High Street	0.61	3a
MKI	Islay	Bowmore	U	19	Ardlarach Moss Road	1.98	3a
MKI	Islay	Bowmore	U	50	Hawthorn Street (Hawthorn Lane)	0.23	3a
MKI	Islay	Bowmore	U	53	Hawthorn Park Housing Scheme Road	0.71	3a
MKI	Islay	Bruichladdich	U	66	Burnside Housing Scheme Road	0.40	3a
MKI	Islay	Keills	U	71	Keills Housing Scheme Road	0.18	3a
MKI	Islay	Port Charlotte	U	43	Port Charlotte Pier Road	0.18	3a
MKI	Islay	Port Charlotte	C	16	Port Charlotte-Kilchearan Road	0.40	3a
MKI	Islay	Port Charlotte	U	63	West End Housing Scheme Road	0.14	3a

Area	Sub Area	Town	Prefix 1	Road No	Road Name	Km	Maintenance Hierarchy
MKI	Islay	Port Charlotte	U	55	Daal Terrace Housing Scheme Road	0.21	3a
MKI	Islay	Port Charlotte	U	62	Rhu Road	0.11	3a
MKI	Islay	Port Ellen	U	67	Antrim View Housing Scheme Road	0.26	3a
MKI	Islay	Port Ellen	U	27	Port Ellen Back Road	0.87	3a
MKI	Islay	Port Ellen	U	69	Cnoc na Faire Housing Scheme Road	0.31	3a
MKI	Islay	Port Ellen	U	68	Bay View Housing Scheme Road	0.11	3a
MKI	Islay	Port Ellen	U	61	Ardview Housing Scheme Road	0.50	3a
MKI	Islay	Port Ellen	U	60	North Bay Housing Scheme Road	0.10	3a
MKI	Islay	Port Ellen	U	54	Mansefield Housing Scheme Roads	0.39	3a
MKI	Islay	Port Ellen	C	17	Port Ellen - Mull of Oa Road	0.39	3a
MKI	Islay	Port Ellen	U	30	The Ard Road	0.48	3a
MKI	Islay	Portnahaven/Port Wemyss	U	45	Portnahaven- Port Wemyss Road	1.22	3a
MKI	Islay	Portnahaven/Port Wemyss	U	52	Shore Street, Portnahaven	0.21	3a
MKI	Islay	Portnahaven/Port Wemyss	U	65	Port Wemyss Side Streets	0.43	3a
BC	Bute	Port Bannatyne	A	844	Circular Route	1.45	1
BC	Bute		A	886	Rhubodach-Kames Castle Road	9.46	1
BC	Bute		A	844	Circular Route	26.54	2
BC	Bute	Rothesay	A	844	Circular Route	7.21	2
BC	Bute		B	881	Rothesay-Kilchattan Bay Road	5.69	2
BC	Bute		B	875	Greenwood Junction-Drumachloy Bridge Road	2.82	3
BC	Bute		B	878	Rothesay-Milton Road	2.33	3
BC	Bute	Rothesay	B	878	Rothesay-Milton Road	0.95	3
BC	Bute		C	1	Bruchag Road	5.31	3
BC	Bute		C	3	Plan Road	3.86	3
BC	Bute	Rothesay	C	4	Roslin Road	0.00	3
BC	Bute		U	1	Loch Ascog Road	1.77	3
BC	Bute		U	4	Straad Road	0.08	3
BC	Bute		U	5	Glecknabae (or Kilmichael) Road	4.02	3
BC	Bute		U	6	Glenmore Road	2.72	3
BC	Bute	Rothesay	U	6	Argyle Terrace	0.26	3
BC	Bute		U	8	Edinbeg Quarry Road	0.40	3
BC	Bute		U	9	Ettrickdale Road	0.14	3
BC	Bute		U	10	Ardmaleish Road	0.72	3
BC	Bute	Port Bannatyne	U	16	Bannatyne Mains Road	0.32	3
BC	Bute		U	23	Loch Fad Road	1.13	3
BC	Bute	Rothesay	U	28	Eastlands Road	1.32	3
BC	Bute	Kilchattan	B	881	Rothesay-Kilchattan Bay Road	2.42	2a
BC	Bute	Rothesay	B	881	Rothesay-Kilchattan Bay Road (Bishop Street)	0.18	2a
BC	Bute	Rothesay	B	881	Rothesay-Kilchattan Bay Road	1.22	2a
BC	Bute	Rothesay	B	881	Rothesay-Kilchattan Bay Road (Castle Street)	0.13	2a
BC	Bute	Port Bannatyne	C	2	Marine Place	1.37	2a
BC	Bute	Rothesay	C	5	Gallowgate	0.43	2a

Area	Sub Area	Town	Prefix 1	Road No	Road Name	Km	Maintenance Hierarchy
BC	Bute	Rothesay	C	5	Columnshill Street	0.00	2a
BC	Bute	Rothesay	U	13	Bridge Street	0.16	2a
BC	Bute	Rothesay	U	39	Hillhouse Road	0.11	2a
BC	Bute	Rothesay	U	50	Mill Street	0.13	2a
BC	Bute	Rothesay	U	51	Montague Street	0.26	2a
BC	Bute	Rothesay	U	69	Westlands Road	1.82	2a
BC	Bute	Rothesay	C	4	Minister's Brae	0.68	3a
BC	Bute	Rothesay	C	5	Bridgend Street	0.00	3a
BC	Bute	Rothesay	U	1	Academy Road	0.31	3a
BC	Bute		U	2	Balmory Road	0.16	3a
BC	Bute	Rothesay	U	2	Albany Street	0.19	3a
BC	Bute		U	3	Mill Road, Kilchattan Bay	0.06	3a
BC	Bute	Rothesay	U	3	Ardencraig Road	0.76	3a
BC	Bute	Ardbeg	U	4	Ardmory Road	0.45	3a
BC	Bute	Rothesay	U	5	Auchnacloch Road	0.29	3a
BC	Bute		U	7	Croc-an-Raer Road	0.06	3a
BC	Bute	Rothesay	U	7	Ballochgoy Road	0.47	3a
BC	Bute	Rothesay	U	8	Bishop Terrace	0.26	3a
BC	Bute	Rothesay	U	10	Blain Terrace	0.11	3a
BC	Bute	Port Bannatyne	U	11	Castle Street	0.56	3a
BC	Bute	Rothesay	U	11	Bellevue Road	0.13	3a
BC	Bute	Port Bannatyne	U	12	George Street	0.05	3a
BC	Bute	Rothesay	U	12	Bogany Road	0.10	3a
BC	Bute	Port Bannatyne	U	13	Duncan Street	0.05	3a
BC	Bute	Port Bannatyne	U	14	Stuart Street	0.05	3a
BC	Bute	Rothesay	U	14	Bryce Avenue	0.21	3a
BC	Bute	Port Bannatyne	U	15	Quay Street	0.05	3a
BC	Bute	Rothesay	U	15	Broadcroft Lane	0.06	3a
BC	Bute	Rothesay	U	16	Bush Avenue (Burn Lane)	0.15	3a
BC	Bute	Port Bannatyne	U	17	Bute Terrace	0.16	3a
BC	Bute	Rothesay	U	17	Bush Road	0.42	3a
BC	Bute	Port Bannatyne	U	18	Pier Lane	0.03	3a
BC	Bute	Rothesay	U	18	Castlehill Street	0.08	3a
BC	Bute	Port Bannatyne	U	19	St Ninian's Church Road	0.05	3a
BC	Bute	Rothesay	U	19	Chapelhill Road	0.24	3a
BC	Bute	Ardbeg	U	20	Beach Drive, Ardbeg	0.06	3a
BC	Bute	Rothesay	U	20	Church Lane	0.10	3a
BC	Bute	Ardbeg	U	21	Creek Drive, Ardbeg	0.02	3a
BC	Bute	Rothesay	U	21	Columnshill Terrace	0.10	3a
BC	Bute	Ardbeg	U	22	Gortans Road	0.16	3a
BC	Bute	Rothesay	U	22	Columnshill Place	0.10	3a
BC	Bute	Rothesay	U	23	Columnshill Lower Terrace	0.05	3a
BC	Bute	Rothesay	U	24	Crichton Road	1.01	3a
BC	Bute	Rothesay	U	25	Deanhood Place	0.05	3a
BC	Bute	Rothesay	U	26	Dewar Avenue	0.08	3a
BC	Bute	Rothesay	U	27	Eaglesham Terrace	0.13	3a
BC	Bute	Rothesay	U	29	Eden Drive	0.43	3a

Area	Sub Area	Town	Prefix 1	Road No	Road Name	Km	Maintenance Hierarchy
BC	Bute	Rothesay	U	30	Fauldtrees Road	0.18	3a
BC	Bute	Rothesay	U	31	Ferfadd Road	0.08	3a
BC	Bute	Rothesay	U	32	Foley Road	0.18	3a
BC	Bute	Rothesay	U	33	Glebe Terrace	0.14	3a
BC	Bute	Rothesay	U	34	Glebelands Road	0.13	3a
BC	Bute	Rothesay	U	35	Glenburn Road	0.21	3a
BC	Bute	Rothesay	U	36	Gowanfield Terrace	0.14	3a
BC	Bute	Rothesay	U	37	Grosvenor Road	0.13	3a
BC	Bute	Rothesay	U	40	John Street	0.06	3a
BC	Bute	Rothesay	U	41	King Street	0.16	3a
BC	Bute	Rothesay	U	42	Ladeside Street	0.26	3a
BC	Bute	Rothesay	U	43	Leopold Road	0.13	3a
BC	Bute	Rothesay	U	44	Longhill Crescent	0.10	3a
BC	Bute	Rothesay	U	45	Longhill Terrace	0.16	3a
BC	Bute	Rothesay	U	46	Lorne Road	0.08	3a
BC	Bute	Rothesay	U	47	MacKinlay Street	0.10	3a
BC	Bute	Rothesay	U	48	McNab's Brae	0.06	3a
BC	Bute	Rothesay	U	49	Meadows Road	0.32	3a
BC	Bute	Rothesay	U	52	Mountpleasant Road	0.31	3a
BC	Bute	Rothesay	U	53	Peddie's Lane	0.03	3a
BC	Bute	Rothesay	U	54	Prospect Terrace	0.16	3a
BC	Bute	Rothesay	U	55	Queen Street	0.08	3a
BC	Bute	Rothesay	U	56	Robertson Drive	0.35	3a
BC	Bute	Rothesay	U	57	Roslin Crescent	0.24	3a
BC	Bute	Rothesay	U	58	Serpentine Road	0.90	3a
BC	Bute	Rothesay	U	59	St Bride's Road	0.37	3a
BC	Bute	Rothesay	U	60	Store Lane	0.08	3a
BC	Bute	Rothesay	U	61	St John's Drive	0.26	3a
BC	Bute	Rothesay	U	62	Stuart Street	0.10	3a
BC	Bute	Rothesay	U	63	Tower Street	0.08	3a
BC	Bute	Rothesay	U	64	Union Street	0.26	3a
BC	Bute	Rothesay	U	65	Wallace Avenue	0.18	3a
BC	Bute	Rothesay	U	66	Watergate	0.13	3a
BC	Bute	Ardbeg	U	67	Watson Place	0.08	3a
BC	Bute	Rothesay	U	68	Wellpark Road	0.26	3a
BC	Bute	Rothesay	U	70	West Princess Street	0.05	3a
BC	Bute	Ardbeg	U	71	Wyndam Road	0.26	3a
BC	Bute	Rothesay	U	72	Wyndam Park	0.14	3a
BC	Bute	Rothesay	U	77	Ardencraig Lane	0.13	3a
BC	Bute	Rothesay	U	78	Riverside Drive	0.11	3a
BC	Bute	Rothesay	U	79	Westfield Grove	0.06	3a
BC	Bute	Rothesay	U	80	Colbeck Lane	0.11	3a
BC	Bute	Rothesay	U	81	Cottonmill Lane	0.10	3a
BC	Bute	Rothesay	U	82	Townhead Industrial Estate Road	0.14	3a
BC	Bute	Rothesay	U	83	Barone Road Industrial Estate Road	0.09	3a
BC	Bute	Rothesay	U	84	Townhead Road	0.16	3a

Area	Sub Area	Town	Prefix 1	Road No	Road Name	Km	Maintenance Hierarchy
BC	Bute	Rothesay	U	85	Foley Park	0.28	3a
B&C	Cowal		A	815	Cairndow-Strachur-Toward Road	37.80	1
B&C	Cowal	Dunoon	A	815	Cairndow-Strachur-Toward Road	9.96	1
B&C	Cowal	Sandbank	A	815	Cairndow-Strachur-Toward Road	3.77	1
B&C	Cowal	Strachur	A	815	Cairndow-Strachur-Toward Road	2.37	1
B&C	Cowal		A	886	Strachur-Colintraive Road	33.56	1
B&C	Cowal	Strachur	A	886	Strachur-Colintraive Road	1.60	1
B&C	Cowal		A	8003	Glendaruel-Tighnabruaich Road	12.04	2
B&C	Cowal		B	828	Glenmore Road	5.21	2
B&C	Cowal		B	836	Dalilongart-Glenlean-Stronafian Road	17.39	2
B&C	Cowal		B	839	Hell's Glen Road	9.57	2
B&C	Cowal	Lochgoilhead	B	839	Hell's Glen Road	0.53	2
B&C	Cowal		B	866	Springfield-Colintraive Road	4.51	3
B&C	Cowal		B	8000	Leanach-Otter Ferry-Tighnabruaich Road	38.13	3
B&C	Cowal	Tighnabruaich and Kames	B	8000	Leanach - Otter Ferry - Tighnabruaich Road	2.65	3
B&C	Cowal		C	6	Lochgoilhead-Carrick Castle Road	6.57	3
B&C	Cowal	Carrick Castle	C	6	Lochgoilhead-Carrick Castle Road	1.68	3
B&C	Cowal		C	7	Kames-Ardlamont	6.35	3
B&C	Cowal		C	9	Glenfinart Road	12.21	3
B&C	Cowal		C	10	Glenstriven Road	13.74	3
B&C	Cowal		C	11	Otter Hill Road	8.74	3
B&C	Cowal		C	57	Strachur-Glenbranter Road	3.92	3
B&C	Cowal		U	12	Succoth Road	2.54	3
B&C	Cowal	Strachur	U	12	Succoth Road	0.12	3
B&C	Cowal		U	15	Glenmasson Road	5.52	3
B&C	Cowal	Sandbank	U	16	Lazaretto Ferry Road	1.26	3
B&C	Cowal		U	17	Toward Pier Road	1.42	3
B&C	Cowal		U	19	Couston Road	8.90	3
B&C	Cowal		U	21	Ormidale Road	2.09	3
B&C	Cowal		U	22	Glendaruel West Road	9.69	3
B&C	Cowal		U	23	Newton Road	1.56	3
B&C	Cowal		U	25	Ardmarnock Road	0.84	3
B&C	Cowal		U	26	Portavadie Road	3.28	3
B&C	Cowal		U	27	Millhouse-Ardlamont Road	7.64	3
B&C	Cowal	Tighnabruaich and Kames	U	28	Kames Shore Road	0.60	3
B&C	Cowal	Cairndow	U	29	Cairndow Village Loop Road	0.68	3
B&C	Cowal	Cairndow	U	29	Cairndow Village Loop Road	0.83	3
B&C	Cowal	Tighnabruaich and Kames	U	32	Kames Shore Road	0.00	3
B&C	Cowal	Tighnabruaich and Kames	U	33	Auchenlochan Back Road	0.89	3
B&C	Cowal	Tighnabruaich and Kames	U	34	Tighnabruaich School Road	0.10	3
B&C	Cowal	Tighnabruaich and Kames	U	39	Cowal Terrace Housing Scheme Roads, Kames	0.24	3
B&C	Cowal		U	44	Strachur - St Catherines Service Roads	2.14	3

Area	Sub Area	Town	Prefix 1	Road No	Road Name	Km	Maintenance Hierarchy
B&C	Cowal		U	45	Glenbranter Housing Road	0.58	3
B&C	Cowal		U	64	Stronafian Road	1.24	3
B&C	Cowal		U	65	Ardchuple Farm Loop Road	1.08	3
B&C	Cowal		U	71	Uig Road	0.32	3
B&C	Cowal		U	72	Hafton Grove	0.44	3
B&C	Cowal		U	76	Clachan of Glendaruel (School Road)	0.10	3
B&C	Cowal	Carrick Castle	U	77	Morrison Park	0.06	3
B&C	Cowal	Innellan	A	815	Cairndow-Strachur-Toward Road	3.61	2a
B&C	Cowal		A	880	Rashfield-Blairmore Road	0.18	2a
B&C	Cowal	Blairmore	A	880	Rashfield-Blairmore Road	0.00	2a
B&C	Cowal	Kilmun	A	880	Rashfield-Blairmore Road	7.52	2a
B&C	Cowal	Strone	A	880	Rashfield-Blairmore Road	0.00	2a
B&C	Cowal	Dunoon	A	885	Sandbank High Road	2.32	2a
B&C	Cowal	Sandbank	A	885	Sandbank High Road	2.09	2a
B&C	Cowal	Tighnabruaich and Kames	A	8003	Glendaruel-Tighnabruaich Road	0.77	2a
B&C	Cowal	Dunoon	B	8041	Queen Street	0.66	2a
B&C	Cowal	Dunoon	B	8042	Victoria Road	1.11	2a
B&C	Cowal	Dunoon	B	8042	Hamilton Street (see Victoria Road)	0.00	2a
B&C	Cowal	Dunoon	C	63	Argyll Road	2.74	2a
B&C	Cowal	Dunoon	C	63	George Street(see Argyll Road)	0.00	2a
B&C	Cowal	Dunoon	C	63	Cammesreinach Brae(see Argyll Road)	0.00	2a
B&C	Cowal	Dunoon	C	63	James Street (part)(see Argyll Road)	0.00	2a
B&C	Cowal	Dunoon	C	63	Scabbie Knowe (see Argyll Road)	0.00	2a
B&C	Cowal	Dunoon	C	63	Hunter Street (see Argyll Road)	0.00	2a
B&C	Cowal	Dunoon	C	63	Clyde Street (see Argyll Road)	0.00	2a
B&C	Cowal	Dunoon	C	63	Park Road (see Argyll Road)	0.00	2a
B&C	Cowal	Dunoon	U	1	Ardenslate Road	1.50	2a
B&C	Cowal	Dunoon	U	3	Alexander Street	1.13	2a
B&C	Cowal	Dunoon	U	7	Auchamore Road (part)	0.56	2a
B&C	Cowal	Dunoon	U	8	Bencorrum Brae	0.26	2a
B&C	Cowal	Dunoon	U	17	Cowal Place	0.32	2a
B&C	Cowal	Dunoon	U	39	Hillfoot Street	0.14	2a
B&C	Cowal	Sandbank	C	8	Cromlech Road, Fir Brae and Pier Road	1.93	3a
B&C	Cowal	Strachur	C	56	Strachur Village Road	0.58	3a
B&C	Cowal	Dunoon	U	2	Ardenslate Crescent	0.32	3a
B&C	Cowal	Dunoon	U	4	Alfred Street	0.37	3a
B&C	Cowal	Dunoon	U	5	Argyll Terrace	0.13	3a
B&C	Cowal	Dunoon	U	6	Argyll Road (part)	0.72	3a
B&C	Cowal	Dunoon	U	9	Bogleha Road	0.08	3a
B&C	Cowal	Dunoon	U	10	Brandon Street	0.14	3a
B&C	Cowal	Dunoon	U	11	Broomfield Drive	0.21	3a
B&C	Cowal	Strachur	U	11	Strachur Mill Road	0.32	3a
B&C	Cowal	Dunoon	U	12	Castle Street	0.10	3a
B&C	Cowal	Dunoon	U	13	Church Square	0.03	3a

Area	Sub Area	Town	Prefix 1	Road No	Road Name	Km	Maintenance Hierarchy
B&C	Cowal	Dunoon	U	14	Church Street	0.13	3a
B&C	Cowal	Dunoon	U	15	Clyde Street	0.35	3a
B&C	Cowal	Dunoon	U	16	Clyde Street, Kirn (part)	0.19	3a
B&C	Cowal	Dunoon	U	18	Cromwell Street	0.29	3a
B&C	Cowal	Dunoon	U	19	Dhailing Road	0.51	3a
B&C	Cowal	Dunoon	U	20	Dhailing Avenue	0.18	3a
B&C	Cowal	Dunoon	U	21	Dixon Avenue	0.74	3a
B&C	Cowal	Dunoon	U	22	Dixon Crescent	0.13	3a
B&C	Cowal	Dunoon	U	23	Dixon Place	0.08	3a
B&C	Cowal	Dunoon	U	24	Eccles Road	0.42	3a
B&C	Cowal	Dunoon	U	25	Edward Street	0.97	3a
B&C	Cowal	Dunoon	U	26	Elizabeth Avenue	0.16	3a
B&C	Cowal	Dunoon	U	27	Eton Avenue	0.11	3a
B&C	Cowal	Dunoon	U	28	Ferry Brae	0.10	3a
B&C	Cowal	Dunoon	U	29	George Street	0.61	3a
B&C	Cowal		U	30	Rhubaan Road	0.93	3a
B&C	Cowal	Dunoon	U	30	Glebe	0.19	3a
B&C	Cowal	Dunoon	U	31	Glebe Avenue	0.06	3a
B&C	Cowal	Innellan	U	31	Innellan Back Roads	2.74	3a
B&C	Cowal	Dunoon	U	32	Glenmorag Avenue	0.12	3a
B&C	Cowal	Dunoon	U	33	Glenmorag Crescent	0.14	3a
B&C	Cowal	Dunoon	U	34	Gordon Street	0.10	3a
B&C	Cowal	Dunoon	U	35	Hafton Court	0.05	3a
B&C	Cowal	Tighnabruaich and Kames	U	35	Village Brae	0.16	3a
B&C	Cowal	Dunoon	U	36	Hamilton Street (part)	0.14	3a
B&C	Cowal	Innellan	U	36	Westpoint and Newton Park Housing Scheme Roads	0.37	3a
B&C	Cowal	Dunoon	U	37	Hanover Street	0.29	3a
B&C	Cowal	Strone	U	37	Westfield Housing Scheme Road	0.27	3a
B&C	Cowal	Dunoon	U	38	Hill Street	0.37	3a
B&C	Cowal	Sandbank	U	38	Sandbank Housing Scheme Roads	0.64	3a
B&C	Cowal	Dunoon	U	40	Hunter Street (part)	0.35	3a
B&C	Cowal	Sandbank	U	40	Ferguslie Street	0.16	3a
B&C	Cowal	Dunoon	U	41	James Street (part)	0.16	3a
B&C	Cowal	Kilmun	U	41	Graham's Point Housing Scheme Road	0.13	3a
B&C	Cowal	Dunoon	U	42	Jane Street	0.23	3a
B&C	Cowal	Lochgoilhead	U	42	Invergoyle Housing Scheme Roads	0.10	3a
B&C	Cowal	Dunoon	U	43	Jessie Place	0.11	3a
B&C	Cowal	Strachur	U	43	Forest View Housing Scheme Road	0.47	3a
B&C	Cowal	Dunoon	U	44	John Street (part)	0.45	3a
B&C	Cowal	Dunoon	U	45	Johnstone Terrace	0.18	3a
B&C	Cowal	Dunoon	U	46	Kilbride Road	0.76	3a
B&C	Cowal	Kilmun	U	46	Finnartmore Housing Scheme Road	0.13	3a
B&C	Cowal	Dunoon	U	47	Kilbride Avenue	0.26	3a
B&C	Cowal	Sandbank	U	47	MacDonald Avenue Housing Scheme Road	0.09	3a

Area	Sub Area	Town	Prefix 1	Road No	Road Name	Km	Maintenance Hierarchy
B&C	Cowal	Dunoon	U	48	King Street	0.45	3a
B&C	Cowal	Dunoon	U	49	Kirk Brae	0.10	3a
B&C	Cowal	Strachur	U	49	Free Church Road	0.10	3a
B&C	Cowal	Dunoon	U	50	Kirk Street	0.21	3a
B&C	Cowal	Strachur	U	50	Clachan Road	0.10	3a
B&C	Cowal	Dunoon	U	51	Kirn Brae	0.29	3a
B&C	Cowal	Dunoon	U	52	Lochan Avenue	0.42	3a
B&C	Cowal	Kilmun	U	52	Johnston Avenue Housing Scheme Road	0.11	3a
B&C	Cowal	Dunoon	U	53	McArthur Street	0.43	3a
B&C	Cowal	Strone	U	53	Back Road	0.48	3a
B&C	Cowal		U	54	Cothouse Road	0.29	3a
B&C	Cowal	Dunoon	U	54	Manse Avenue	0.11	3a
B&C	Cowal	Dunoon	U	55	Mary Street	0.47	3a
B&C	Cowal	Strone	U	55	Dunselma Court Housing Scheme Road	0.34	3a
B&C	Cowal	Colintraive	U	56	Kyles View Housing Scheme Road	0.08	3a
B&C	Cowal	Dunoon	U	56	Milton Road	0.24	3a
B&C	Cowal	Ardentinny	U	57	Ardfin Avenue Housing Scheme Road, Ardentinny	0.05	3a
B&C	Cowal	Dunoon	U	57	Milton Avenue	0.06	3a
B&C	Cowal	Dunoon	U	58	Moir Street	0.10	3a
B&C	Cowal	Tighnabraich and Kames	U	58	Anne Terrace Housing Scheme Road	0.06	3a
B&C	Cowal	Dunoon	U	59	Nelson Street	0.23	3a
B&C	Cowal	Tighnabraich and Kames	U	59	Charles Terrace Housing Scheme Road	0.03	3a
B&C	Cowal	Dunoon	U	60	Nile Street	0.06	3a
B&C	Cowal	Innellan	U	60	Tor Aluinn Housing Scheme Road	0.05	3a
B&C	Cowal	Dunoon	U	61	Park Road (part)	0.14	3a
B&C	Cowal	Innellan	U	61	Miller Avenue Housing Scheme Road	0.13	3a
B&C	Cowal	Dunoon	U	62	Park Avenue	0.13	3a
B&C	Cowal	Sandbank	U	62	Finbracken Housing Scheme Road	0.08	3a
B&C	Cowal	Dunoon	U	63	Park Square (Twin roads)	0.14	3a
B&C	Cowal	Strachur	U	63	Clachan Beag	0.08	3a
B&C	Cowal	Dunoon	U	64	Pilot Street	0.35	3a
B&C	Cowal	Dunoon	U	65	Royal Crescent	0.39	3a
B&C	Cowal	Dunoon	U	66	Sanderson Drive	0.18	3a
B&C	Cowal	Sandbank	U	66	Eagle Court (Sandhaven)	0.40	3a
B&C	Cowal	Dunoon	U	67	School Brae	0.05	3a
B&C	Cowal	Sandbank	U	67	Eagle Court (Sandhaven)	0.25	3a
B&C	Cowal	Dunoon	U	68	The Sheiling	0.03	3a
B&C	Cowal	Sandbank	U	68	Sandbank Industrial Estate Road (Highland Avenue)	0.75	3a
B&C	Cowal	Dunoon	U	69	Stewart Street	0.29	3a
B&C	Cowal	Innellan	U	69	Innellan Park Road	0.26	3a
B&C	Cowal	Dunoon	U	70	Union Lane	0.05	3a
B&C	Cowal	Sandbank	U	70	Albert Place	0.18	3a

Area	Sub Area	Town	Prefix 1	Road No	Road Name	Km	Maintenance Hierarchy
B&C	Cowal	Dunoon	U	71	Union Street	0.18	3a
B&C	Cowal	Dunoon	U	72	Victoria Road, Hunter's Quay (part)	0.16	3a
B&C	Cowal	Dunoon	U	73	West Street	0.10	3a
B&C	Cowal	Innellan	U	73	Dalriada Grove	0.06	3a
B&C	Cowal	Dunoon	U	74	William Street	0.35	3a
B&C	Cowal	Lochgoilhead	U	74	Hall Road	0.53	3a
B&C	Cowal	Lochgoilhead	U	75	Donich Park	0.11	3a
B&C	Cowal	Dunoon	U	78	Cherryhill Housing Scheme Road	0.11	3a
B&C	Cowal	Tighnabraich and Kames	U	78	Police Station Brae	0.23	3a
B&C	Cowal	Dunoon	U	79	Waverley Court Housing Scheme Roads (Fairhaven)	0.14	3a
B&C	Cowal	Sandbank	U	79	Cromlech Grove	0.14	3a
B&C	Cowal	Blairmore	U	80	The Crescent	0.12	3a
B&C	Cowal	Dunoon	U	80	Cammesreinach Crescent (Victoria Crescent)	0.23	3a
B&C	Cowal	Sandbank	U	80	Albert Place	0.03	3a
B&C	Cowal	Dunoon	U	81	Laudervale, Bullwood	0.13	3a
B&C	Cowal	Dunoon	U	82	Mount Carmel (Lundy Park), Kirn	0.11	3a
B&C	Cowal	Dunoon	U	83	Miller Court, Dunoon	0.06	3a
B&C	Cowal	Dunoon	U	84	Ash Gardens	0.08	3a
B&C	Cowal	Dunoon	U	85	Albert Crescent	0.05	3a
HL	Lomond	Arrochar	A	814	Dunbarton-Arrochar Road	1.22	1
HL	Lomond	Rhu	A	814	Dunbarton-Arrochar Road	1.62	1
HL	Lomond	Helensburgh	A	814	Dunbarton-Arrochar Road	2.92	1
HL	Lomond	Cardross	A	814	Dunbarton-Arrochar Road	1.53	1
HL	Lomond		A	814	Dumbarton-Arrochar Road	32.34	1
HL	Lomond		A	817	Haul Road	14.31	1
HL	Lomond	Helensburgh	B	832	Sinclair Street	1.74	1
HL	Lomond	Garelochhead	B	872	Garelochhead Road	2.00	1
HL	Lomond		B	872	Garelochhead Road	1.74	1
HL	Lomond	Cove	B	833	Rosneath Road	0.00	1
HL	Lomond		B	833	Rosneath Road	11.84	1
HL	Lomond		B	832	Helensburgh-Loch Lomond Road	6.65	1
HL	Lomond		B	831	Crosskeys-Arden Roundabout	2.38	1
HL	Lomond	Kilcreggan	B	833	Rosneath Road	5.94	1
HL	Lomond	Rosneath	B	833	Rosneath Road	2.50	1
HL	Lomond	Garelochhead	B	833	Rosneath Road	2.00	1
HL	Lomond	Clynder	B	833	Rosneath Road	0.00	1
HL	Lomond	Arrochar	B	838	Church Road	0.87	1
HL	Lomond	Helensburgh	C	75	West Montrose Street	1.04	2
HL	Lomond	Helensburgh	C	75	Rhu Road Higher	0.92	2
HL	Lomond	Helensburgh	U	134	Golfhill Drive	0.34	2
HL	Lomond	Helensburgh	U	147	Henry Bell Street	0.64	2
HL	Lomond	Rhu	U	189	Lineside Walk	0.46	2
HL	Lomond	Rhu	U	19	Aros Road	0.28	2
HL	Lomond	Helensburgh	U	70	Colquhoun Square	0.24	2
HL	Lomond	Helensburgh	U	280	Suffolk Street	0.96	2

Area	Sub Area	Town	Prefix 1	Road No	Road Name	Km	Maintenance Hierarchy
HL	Lomond	Helensburgh	U	268	South King Street	0.48	2
HL	Lomond	Helensburgh	U	57	Charlotte Street	1.07	2
HL	Lomond	Helensburgh	U	97	East Abercrombie Street	0.99	2
HL	Lomond	Helensburgh	U	101	East King Street	1.38	2
HL	Lomond	Garelochhead	U	325	Feorlinn Way	0.79	2
HL	Lomond	Helensburgh	U	314	West King Street	1.58	2
HL	Lomond	Helensburgh	U	240	Queen Street	1.03	2
HL	Lomond	Rhu	U	234	Pier Road	0.67	2
HL	Lomond	Helensburgh	U	229	Old Luss Road	1.07	2
HL	Lomond	Helensburgh	U	322	Winston Road	1.27	2
HL	Lomond	Rhu	U	275	Station Road	0.75	2
HL	Lomond	Rhu	U	264	Smugglers Way	0.79	2
HL	Lomond	Helensburgh	U	152	Hood Court	0.12	3
HL	Lomond	Cardross	U	135	Graham Crescent	0.18	3
HL	Lomond	Helensburgh	U	136	Graham Place	0.13	3
HL	Lomond	Helensburgh	U	153	Hope Street	0.05	3
HL	Lomond	Rhu	U	140	Guthrie Place	0.09	3
HL	Lomond	Helensburgh	U	141	Guy Mannering Road	0.20	3
HL	Lomond	Rhu	U	142	Hall Road	0.15	3
HL	Lomond	Helensburgh	U	144	Hardy Hill	0.28	3
HL	Lomond	Helensburgh	U	145	Havelock Place	0.26	3
HL	Lomond	Garelochhead	U	148	Hepburn Road	0.09	3
HL	Lomond	Helensburgh	U	151	Hillview Drive	0.12	3
HL	Lomond	Cardross	U	150	Hillside Road	0.65	3
HL	Lomond	Helensburgh	U	165	Kathleen Park	0.15	3
HL	Lomond	Helensburgh	U	99	East Dhuhill Drive	0.10	3
HL	Lomond	Helensburgh	U	100	East Douglas Drive	0.13	3
HL	Lomond	Helensburgh	U	107	Easterhill Road	0.23	3
HL	Lomond	Helensburgh	U	108	Edward Drive	0.40	3
HL	Lomond	Helensburgh	U	109	Empress Drive	0.11	3
HL	Lomond	Rhu	U	110	Empress Road	0.08	3
HL	Lomond	Kilcreggan	U	111	Fairfield Gardens	0.34	3
HL	Lomond	Cardross	U	112	Fairway	0.11	3
HL	Lomond	Helensburgh	U	113	Ferniegair Avenue	0.18	3
HL	Lomond	Helensburgh	U	118	Fraser Avenue	0.18	3
HL	Lomond	Helensburgh	U	116	Fisher Place	0.13	3
HL	Lomond	Helensburgh	U	132	Glenfinlas Street	0.06	3
HL	Lomond	Helensburgh	U	154	Horton Place	0.09	3
HL	Lomond	Helensburgh	U	119	Frobisher Place	0.12	3
HL	Lomond	Rosneath	U	120	Gare Road	0.15	3
HL	Lomond	Helensburgh	U	121	Garrawy Place	0.04	3
HL	Lomond	Helensburgh	U	123	George Street	0.15	3
HL	Lomond	Helensburgh	U	125	Gillespie Drive	0.22	3
HL	Lomond	Rhu	U	127	Glebefield Road	0.10	3
HL	Lomond	Helensburgh	U	128	Glen Drive	0.28	3
HL	Lomond	Cardross	U	114	Ferry Road	0.30	3
HL	Lomond	Helensburgh	U	197	Machrie Drive	0.22	3

Area	Sub Area	Town	Prefix 1	Road No	Road Name	Km	Maintenance Hierarchy
HL	Lomond	Rhu	U	163	Jupiter Place	0.09	3
HL	Lomond	Rhu	U	183	Laggary Park	0.32	3
HL	Lomond	Rhu	U	184	Laggary Road	0.16	3
HL	Lomond	Helensburgh	U	185	Lamlash Place	0.09	3
HL	Lomond	Helensburgh	U	187	Lawrence Avenue	0.27	3
HL	Lomond	Helensburgh	U	188	Lever Road	0.32	3
HL	Lomond	Cardross	U	181	Kirkton Road	0.45	3
HL	Lomond	Helensburgh	U	192	Lochranza Drive	0.27	3
HL	Lomond	Cardross	U	180	Kirkton Crescent	0.25	3
HL	Lomond	Helensburgh	U	198	MacLachlan Place	0.05	3
HL	Lomond	Helensburgh	U	199	MacLachlan Road	0.49	3
HL	Lomond	Helensburgh	U	200	MacLeod Crescent	0.15	3
HL	Lomond	Helensburgh	U	201	MacLeod Drive	0.59	3
HL	Lomond	Rosneath	U	202	Main Road	0.07	3
HL	Lomond	Helensburgh	U	203	Mains Avenue	0.15	3
HL	Lomond	Helensburgh	U	204	Maitland Street	0.14	3
HL	Lomond	Garelochhead	U	190	Linn Walk	0.22	3
HL	Lomond	Helensburgh	U	169	Kent Drive	0.49	3
HL	Lomond	Helensburgh	U	158	Jeanie Deans Drive	0.15	3
HL	Lomond	Helensburgh	U	159	Jellicoe Place	0.10	3
HL	Lomond	Helensburgh	U	160	Jervis Place	0.06	3
HL	Lomond	Helensburgh	U	162	Johnson Court	0.05	3
HL	Lomond	Helensburgh	U	96	Duncan Road	0.39	3
HL	Lomond	Helensburgh	U	164	Jutland Court	0.14	3
HL	Lomond	Colgrain	U	85	Dennistoun Crescent	0.49	3
HL	Lomond	Cove	U	182	Knockderry Road	0.19	3
HL	Lomond	Helensburgh	U	168	Kent Court	0.05	3
HL	Lomond	Rosneath	U	155	Howie Crescent	0.14	3
HL	Lomond	Helensburgh	U	171	Kilbride Drive	0.13	3
HL	Lomond	Helensburgh	U	172	Kildonan Drive	0.46	3
HL	Lomond	Cardross	U	173	Kilmahew Avenue	0.33	3
HL	Lomond	Cardross	U	174	Kilmahew Court	0.05	3
HL	Lomond	Cardross	U	175	Kilmahew Drive	0.11	3
HL	Lomond	Arrochar	U	178	Kirkfield Place	0.29	3
HL	Lomond	Helensburgh	U	179	Kirkmichael Road	0.35	3
HL	Lomond	Colgrain	U	166	Kenilworth Avenue	0.26	3
HL	Lomond	Cardross	U	33	Barrs Terrace	0.18	3
HL	Lomond	Helensburgh	U	5	Adelaide Street	0.15	3
HL	Lomond	Helensburgh	U	191	Loch Drive	0.54	3
HL	Lomond	Helensburgh	U	25	Bain Crescent	0.41	3
HL	Lomond	Cardross	U	26	Bainfield Road	0.58	3
HL	Lomond	Helensburgh	U	27	Baird Avenue	0.22	3
HL	Lomond	Tarbet	U	28	Ballyhennan Crescent	0.52	3
HL	Lomond	Helensburgh	U	29	Bannachra Drive	0.13	3
HL	Lomond	Cardross	U	87	Dick Quadrant	0.07	3
HL	Lomond	Cardross	U	32	Barrs Road	0.47	3
HL	Lomond	Helensburgh	U	22	Athole Street	0.08	3

Area	Sub Area	Town	Prefix 1	Road No	Road Name	Km	Maintenance Hierarchy
HL	Lomond	Helensburgh	U	34	Beatty Place	0.07	3
HL	Lomond	Rhu	U	35	Beech Grove	0.11	3
HL	Lomond	Colgrain	U	36	Beechgrove Place	0.10	3
HL	Lomond	Helensburgh	U	37	Ben Bouie Drive	0.30	3
HL	Lomond	Helensburgh	U	39	Bonar Law Avenue	0.16	3
HL	Lomond	Helensburgh	U	40	Boston Drive	0.11	3
HL	Lomond	Rosneath	U	44	Broom Road	0.09	3
HL	Lomond	Helensburgh	U	45	Buchanan Road	0.47	3
HL	Lomond	Helensburgh	U	30	Barclay Drive	0.50	3
HL	Lomond	Rhu	U	14	Ardenconnel Way	0.26	3
HL	Lomond	Arrochar	U	133	Glenloin Housing Scheme Road, Succoth	1.17	3
HL	Lomond	Arrochar	U	336	Beechwood, Church Road	0.08	3
HL	Lomond		U	149	Hill of Ardmore Ferry Road	0.78	3
HL	Lomond	Colgrain	U	1	Abbotsford Drive	0.13	3
HL	Lomond	Helensburgh	U	2	Abercromby Crescent	0.55	3
HL	Lomond	Colgrain	U	8	Aldrin Road	0.09	3
HL	Lomond	Rhu	U	9	Alexander Place	0.09	3
HL	Lomond	Luss	U	61	Church Road	0.32	3
HL	Lomond	Helensburgh	U	13	Ardencaple Quadrant	0.27	3
HL	Lomond	Kilcreggan	U	15	Argyll Road	1.64	3
HL	Lomond	Rosneath	U	16	Argyll Road	0.38	3
HL	Lomond	Rhu	U	17	Armadale Road	0.20	3
HL	Lomond	Colgrain	U	18	Armstrong Road	0.22	3
HL	Lomond	Rhu	U	20	Artarman Road	0.16	3
HL	Lomond	Colgrain	U	21	Ashton Drive	0.08	3
HL	Lomond	Colgrain	U	49	Campbell Drive	0.07	3
HL	Lomond	Rhu	U	11	Arden Hill	0.11	3
HL	Lomond	Helensburgh	U	86	Diana Vernon Court	0.05	3
HL	Lomond	Helensburgh	U	46	Butt Avenue	0.18	3
HL	Lomond	Helensburgh	U	77	Cove Place	0.06	3
HL	Lomond	Helensburgh	U	78	Craigendoran Avenue	0.17	3
HL	Lomond	Kilcreggan	U	79	Craigrownie Gardens	0.15	3
HL	Lomond	Helensburgh	U	80	Crawford Drive	0.30	3
HL	Lomond	Helensburgh	U	81	Cumberland Avenue	0.36	3
HL	Lomond	Rhu	U	82	Cumberland Road	0.23	3
HL	Lomond	Helensburgh	U	83	Dalmore Crescent	0.48	3
HL	Lomond	Rosneath	U	75	Court Hill	0.45	3
HL	Lomond	Arrochar	U	214	McKenzie Avenue	0.13	3
HL	Lomond	Helensburgh	U	74	Coulport Place	0.06	3
HL	Lomond	Helensburgh	U	205	Malcolm Place	0.26	3
HL	Lomond	Helensburgh	U	88	Dixon Road	0.11	3
HL	Lomond	Kilcreggan	U	89	Donaldson's Brae	0.46	3
HL	Lomond	Helensburgh	U	90	Drumadon Drive	0.18	3
HL	Lomond	Helensburgh	U	91	Drumfork Court	0.08	3
HL	Lomond	Helensburgh	U	92	Drumfork Road	0.83	3
HL	Lomond	Helensburgh	U	93	Duchess Drive	0.32	3

Area	Sub Area	Town	Prefix 1	Road No	Road Name	Km	Maintenance Hierarchy
HL	Lomond	Helensburgh	U	94	Duchess Park	0.21	3
HL	Lomond	Helensburgh	U	63	Churchill Square	0.11	3
HL	Lomond	Garelochhead	U	95	Dunavard Road	0.24	3
HL	Lomond	Helensburgh	U	51	Camperdown Court	0.19	3
HL	Lomond	Helensburgh	U	52	Camsail Avenue	0.05	3
HL	Lomond	Rosneath	U	53	Camsail Road	0.09	3
HL	Lomond	Helensburgh	U	54	Cardross Road	0.31	3
HL	Lomond	Helensburgh	U	56	Chapelacre Grove	0.22	3
HL	Lomond	Cardross	U	58	Church Avenue	0.34	3
HL	Lomond	Rhu	U	59	Church Place	0.08	3
HL	Lomond	Helensburgh	U	76	Courtrai Avenue	0.09	3
HL	Lomond	Rhu	U	62	Church Road	0.24	3
HL	Lomond	Helensburgh	U	48	Cairndhu Gardens	0.08	3
HL	Lomond	Rosneath	U	64	Clachan Bridge	0.03	3
HL	Lomond	Rosneath	U	65	Clachan Road	0.42	3
HL	Lomond	Arrochar	U	66	Cobbler View	0.19	3
HL	Lomond	Helensburgh	U	67	Cochrane Place	0.06	3
HL	Lomond	Helensburgh	U	68	Collingwood Place	0.07	3
HL	Lomond	Colgrain	U	69	Collins Road	0.35	3
HL	Lomond	Helensburgh	U	73	Corrie Place	0.06	3
HL	Lomond	Cove	U	60	Church Road	0.25	3
HL	Lomond	Helensburgh	U	274	Station Road	0.38	3
HL	Lomond	Helensburgh	U	258	Rowallan Street	0.11	3
HL	Lomond	Helensburgh	U	195	Lorne Street	0.05	3
HL	Lomond	Helensburgh	U	196	Lower Sutherland Crescent	0.19	3
HL	Lomond	Helensburgh	U	218	Millig Street	1.18	3
HL	Lomond	Helensburgh	U	220	Monaebrook Place	0.30	3
HL	Lomond	Helensburgh	U	278	Strathclyde Place	0.09	3
HL	Lomond	Helensburgh	U	265	Somerville Lane	0.13	3
HL	Lomond	Helensburgh	U	176	Kings Crescent	0.31	3
HL	Lomond	Helensburgh	U	271	Stafford Street	0.41	3
HL	Lomond	Helensburgh	U	167	Kennedy Drive	0.79	3
HL	Lomond	Helensburgh	U	282	Sutherland Street	0.25	3
HL	Lomond	Helensburgh	U	301	Upper John Street	0.22	3
HL	Lomond	Helensburgh	U	302	Upper Sutherland Crescent	0.36	3
HL	Lomond	Helensburgh	U	303	Upper Sutherland Street	0.16	3
HL	Lomond	Helensburgh	U	306	Victoria Road	0.38	3
HL	Lomond	Helensburgh	U	317	West Princes Street	1.26	3
HL	Lomond	Clynder	U	42	Brookend Brae	0.07	3
HL	Lomond	Helensburgh	U	72	Columba Street	0.12	3
HL	Lomond	Clynder	U	24	Back Road	1.20	3
HL	Lomond	Rhu	U	206	Manse Brae	0.46	3
HL	Lomond	Helensburgh	U	41	Brodick Drive	0.10	3
HL	Lomond	Rosneath	U	115	Ferry Road	0.40	3
HL	Lomond		U	129	Glen Luss Road	3.70	3
HL	Lomond	Rhu	U	131	Glenarn Road	0.17	3
HL	Lomond	Helensburgh	U	193	Lomond Street	0.15	3

Area	Sub Area	Town	Prefix 1	Road No	Road Name	Km	Maintenance Hierarchy
HL	Lomond	Helensburgh	U	71	Colquhoun Street	1.05	3
HL	Lomond	Helensburgh	U	311	West Dhuhill Drive	0.24	3
HL	Lomond	Helensburgh	U	98	East Argyll Street	0.52	3
HL	Lomond	Helensburgh	U	126	Glasgow Road	0.72	3
HL	Lomond	Helensburgh	U	130	Glen Road	0.11	3
HL	Lomond	Helensburgh	U	209	McAulay Place	0.07	3
HL	Lomond	Luss	U	253	School Road	0.14	3
HL	Lomond	Helensburgh	U	161	John Street	0.59	3
HL	Lomond	Rhu	U	156	Inchgower Grove	0.06	3
HL	Lomond	Helensburgh	U	143	Hanover Street	0.14	3
HL	Lomond	Helensburgh	U	102	East Lennox Drive	0.31	3
HL	Lomond	Helensburgh	U	247	Redgauntlet Road	0.03	3
HL	Lomond	Helensburgh	U	55	Castle Avenue	0.17	3
HL	Lomond	Shandon	U	242	Queens Point, Shandon	0.32	3
HL	Lomond	Helensburgh	U	105	East Princes Street	0.93	3
HL	Lomond	Helensburgh	U	194	Lomond Street	0.26	3
HL	Lomond	Helensburgh	U	137	Grant Street	0.04	3
HL	Lomond	Cove	U	287	The Linn	0.12	3
HL	Lomond	Shandon	U	262	Shore Road	1.27	3
HL	Lomond	Garelochhead	U	208	McAulay Place	0.07	3
HL	Lomond	Helensburgh	U	323	Woodend Street	0.23	3
HL	Lomond	Helensburgh	U	106	East Rossdhu Drive	0.39	3
HL	Lomond	Helensburgh	U	122	Garraway Road	0.15	3
HL	Lomond	Helensburgh	U	157	James Street	0.82	3
HL	Lomond	Helensburgh	U	170	Kidston Drive	0.62	3
HL	Lomond	Helensburgh	U	299	Upper Glenfinlas Street	0.20	3
HL	Lomond	Rhu	U	304	Upper Torwoodhill Road	0.26	3
HL	Lomond	Helensburgh	U	3	Abercrombie Place West	0.09	3
HL	Lomond	Helensburgh	U	138	Grant Street	0.31	3
HL	Lomond	Helensburgh	U	269	St Michaels Drive	0.39	3
HL	Lomond	Helensburgh	U	315	West Lennox Drive	0.41	3
HL	Lomond	Helensburgh	U	316	West Munro Drive	0.11	3
HL	Lomond	Helensburgh	U	318	West Rossdhu Drive	0.41	3
HL	Lomond	Helensburgh	U	319	West Stafford Street	0.20	3
HL	Lomond	Helensburgh	U	124	George Street	0.30	3
HL	Lomond		U	266	Maidstone Road)South Access Naval Base, Faslane)	1.91	3
HL	Lomond	Helensburgh	U	103	East Montrose Street	0.79	3
HL	Lomond	Helensburgh	U	297	Upper Adelaide Street	0.09	3
HL	Lomond	Helensburgh	U	146	Havelock Street	0.54	3
HL	Lomond	Helensburgh	U	38	Blackhill Drive	0.61	3
HL	Lomond	Helensburgh	U	320	William Street	0.47	3
HL	Lomond	Shandon	U	177	Kirkbrae	0.18	3
HL	Lomond	Helensburgh	U	139	Granville Street	0.30	3
HL	Lomond	Helensburgh	U	310	West Argyll Street	1.00	3
HL	Lomond	Kilcreggan	U	281	Sunnyside Road	0.09	3
HL	Lomond	Helensburgh	U	298	Upper Colquhoun Street	0.57	3

Area	Sub Area	Town	Prefix 1	Road No	Road Name	Km	Maintenance Hierarchy
HL	Lomond	Helensburgh	U	50	Campbell Street	0.83	3
HL	Lomond	Cove	U	260	Shanton Road	0.13	3
HL	Lomond	Helensburgh	U	104	East Munro Drive	0.13	3
HL	Lomond	Helensburgh	U	235	Pirrmill Place	0.07	3
HL	Lomond	Helensburgh	U	236	Pladda Way	0.20	3
HL	Lomond	Cove	U	238	Public Park Road	0.11	3
HL	Lomond	Rhu	U	239	Quarry Knowe	0.06	3
HL	Lomond	Garelochhead	U	241	Queens Crescent	0.26	3
HL	Lomond	Helensburgh	U	255	Sannox Place	0.07	3
HL	Lomond	Cardross	U	243	Reay Avenue	0.12	3
HL	Lomond	Helensburgh	U	232	Paterson Drive	0.12	3
HL	Lomond	Helensburgh	U	245	Redclyffe Gardens	0.58	3
HL	Lomond	Helensburgh	U	246	Redgauntlet Road	0.33	3
HL	Lomond	Cardross	U	248	Ritchie Avenue	0.16	3
HL	Lomond	Helensburgh	U	47	Cairndhu Avenue	0.27	3
HL	Lomond	Helensburgh	U	250	Rodney Place	0.05	3
HL	Lomond	Cardross	U	31	Barrs Court	0.07	3
HL	Lomond	Helensburgh	U	252	Rosneath Drive	0.05	3
HL	Lomond	Rhu	U	254	Rowmore Quays	0.07	3
HL	Lomond	Clynder	U	43	Brooks Road	0.34	3
HL	Lomond	Cardross	U	223	Muirend Road	0.42	3
HL	Lomond	Helensburgh	U	207	Marmion Avenue	0.53	3
HL	Lomond	Helensburgh	U	210	McAuslan Place	0.08	3
HL	Lomond	Helensburgh	U	211	McEwan Drive	0.18	3
HL	Lomond	Arrochar	U	213	McFarlane Place	0.08	3
HL	Lomond	Helensburgh	U	215	Middleton Lane	0.12	3
HL	Lomond	Cardross	U	216	Mill Road	0.09	3
HL	Lomond	Helensburgh	U	217	Millerslea Gardens	0.05	3
HL	Lomond	Cardross	U	219	Mitchell Drive	0.11	3
HL	Lomond	Helensburgh	U	222	Mossend Avenue	0.04	3
HL	Lomond	Luss	U	233	Pier Road	0.30	3
HL	Lomond	Cardross	U	224	Napier Avenue	0.49	3
HL	Lomond	Helensburgh	U	225	Nelson Place	0.16	3
HL	Lomond	Helensburgh	U	227	Nursery Street	0.15	3
HL	Lomond	Garelochhead	U	230	Park Avenue	0.07	3
HL	Lomond	Cardross	U	231	Park Terrace	0.10	3
HL	Lomond	Helensburgh	U	251	Rosedale Gardens	0.11	3
HL	Lomond	Helensburgh	U	221	Moore Drive	0.11	3
HL	Lomond	Helensburgh	U	313	West Douglas Drive	0.12	3
HL	Lomond	Rhu	U	292	Torwoodhill Road	0.51	3
HL	Lomond	Helensburgh	U	294	Townhead Road	0.22	3
HL	Lomond	Garelochhead	U	256	School Road	0.20	3
HL	Lomond	Garelochhead	U	296	Upland Wynd	0.17	3
HL	Lomond	Cardross	U	249	River View Crescent	0.23	3
HL	Lomond	Helensburgh	U	305	Urquhart Place	0.06	3
HL	Lomond	Rhu	U	307	Watersedge	0.09	3
HL	Lomond	Helensburgh	U	308	Waverley Avenue	0.22	3

Area	Sub Area	Town	Prefix 1	Road No	Road Name	Km	Maintenance Hierarchy
HL	Lomond	Rhu	U	291	Torr Crescent	0.14	3
HL	Lomond	Helensburgh	U	312	West Dhuhill Drive	0.11	3
HL	Lomond	Garelochhead	U	295	Upland Road	0.37	3
HL	Lomond	Helensburgh	U	321	Williamson Drive	0.18	3
HL	Lomond	Shandon	U	324	Woodlea Crescent	0.17	3
HL	Lomond	Helensburgh	U	4	Adelaide Street	0.13	3
HL	Lomond	Kilcreggan	U	6	Aidenkyle Road	0.22	3
HL	Lomond	Helensburgh	U	7	Albert Drive	0.43	3
HL	Lomond	Clynder	U	10	Annoch Mhor Road	0.13	3
HL	Lomond	Helensburgh	U	12	Ardencaple Drive	0.46	3
HL	Lomond	Helensburgh	U	309	West Abercomby St	0.32	3
HL	Lomond	Rosneath	U	270	St. Modans Way	0.10	3
HL	Lomond	Kilcreggan	U	257	School Road	0.73	3
HL	Lomond	Rhu	U	259	School Road	0.19	3
HL	Lomond	Helensburgh	U	261	Shiskine Place	0.05	3
HL	Lomond	Helensburgh	U	263	Sinclair Drive	0.24	3
HL	Lomond	Rhu	U	300	Upper Hall Road	0.09	3
HL	Lomond	Rosneath	U	290	Tom A Mhoid	0.23	3
HL	Lomond	Garelochhead	U	273	Station Road	0.51	3
HL	Lomond	Cardross	U	272	Station Road	0.25	3
HL	Lomond	Clynder	U	288	The Soundings	0.10	3
HL	Lomond	Kilcreggan	U	289	Tigh Dearg Road	0.21	3
HL	Lomond	Clynder	U	276	Straid A Cnoc	0.33	3
HL	Lomond	Garelochhead	U	286	The Fairway	0.18	3
HL	Lomond	Rosneath	U	285	The Clachan	0.09	3
HL	Lomond	Shandon	U	284	The Birches	0.14	3
HL	Lomond	Helensburgh	U	283	Talisman Crescent	0.37	3
HL	Lomond	Helensburgh	U	279	Stuckleckie Road	0.24	3
HL	Lomond	Clynder	U	277	Straid Bheag	0.20	3
HL	Lomond		C	74	Carman Road, Cardross	2.47	2a
HL	Lomond		C	72	Peaton Road, Cove	3.05	2a
HL	Lomond		U	23	Auchendennan Road, Duck Bay	1.10	2a
HL	Lomond	Luss	U	228	Old A82 Luss	3.10	2a
HL	Lomond		C	73	Barbour Road, Cove	4.70	3a
HL	Lomond		C	71	Highfields Road, Glen Fruin	3.68	3a
HL	Lomond		C	70	Glen Fruin Road	11.24	3a
HL	Lomond		C	69	Glen Douglas Road	9.45	3a
HL	Lomond		C	55	Torpedo Range Road	0.64	3a
HL	Lomond		C	73	Barbour Road. Kilcreggan	2.06	3a
HL	Lomond	Kilcreggan	U	117	Fort Road	1.46	3a
HL	Lomond		U	186	Larachpark Road	0.34	3a
HL	Lomond	Cardross	U	84	Darleith Road	2.93	3a
HL	Lomond	Cove	U	226	North Ailey Road	0.82	3a
HL	Lomond	Arrochar	U	212	McFarlane Drive	0.04	3a
HL	Lomond		U	244	Red Road	2.67	3a
HL	Lomond		U	237	Portincaple Road	0.95	3a
HL	Lomond	Cove	U	267	South Ailey Road	0.31	3a

Area	Sub Area	Town	Prefix 1	Road No	Road Name	Km	Maintenance Hierarchy
OLI	Lorn	Oban	U	1	Rowan Road	0.08	3a
OLI	Lorn	Oban	U	2	Deanery Brae	0.09	3a
OLI	Lorn	Oban	U	4	Croft Road	0.53	3a
OLI	Lorn	Oban	U	5	Croft Avenue	0.24	3a
OLI	Lorn	Oban	U	6	Longsdale Crescent	0.27	3a
OLI	Lorn	Oban	U	7	Longsdale Terrace	0.49	3a
OLI	Lorn	Oban	U	8	Hazeldean Crescent	0.25	3a
OLI	Lorn	Oban	U	9	Longsdale Road	0.57	3a
OLI	Lorn		U	10	Kilmelford - Auchnasaul Road	10.85	3
OLI	Lorn	Oban	U	11	Dalriach Road	0.43	3a
OLI	Lorn	Oban	U	12	Dalriach Park Terrace	0.06	3a
OLI	Lorn	Oban	U	13	Ardconnel Road	0.44	3a
OLI	Lorn		U	14	Scammadale Road	7.48	3
OLI	Lorn	Oban	U	14	Benvoullin Road	0.85	3a
OLI	Lorn	Isle Of Seil	U	15	Balvicar Road	0.64	3a
OLI	Lorn	Oban	U	15	Duncraggan Road	0.29	3a
OLI	Lorn		U	16	Armaddy Ferry Road	1.16	3
OLI	Lorn	Oban	U	16	Laurel Road	0.51	3a
OLI	Lorn	Isle Of Seil	U	17	Ardencaple Road	2.09	3a
OLI	Lorn	Oban	U	17	Laurel Crescent	0.20	3a
OLI	Lorn		U	18	Barran - Kilmore Road	4.41	3
OLI	Lorn	Oban	U	18	Rockfield Road	0.33	3a
OLI	Lorn		U	19	Barran - Connel Road	5.29	3
OLI	Lorn	Oban	U	19	Ardconnel Terrace	0.24	3a
OLI	Lorn	Oban	U	21	Hill Street	0.22	3a
OLI	Lorn		U	22	Achavaich Road	5.26	3
OLI	Lorn	Oban	U	22	Tweeddale Street	0.13	3a
OLI	Lorn		U	24	Glenshellach Road	2.57	3
OLI	Lorn		U	25	Musdale road	7.82	3
OLI	Lorn		C	25	Bonawe Road	9.00	2
OLI	Lorn		C	25	Bonawe Road	1.75	3
OLI	Lorn	Oban	U	25	Stevenson Street	0.20	3a
OLI	Lorn		C	26	Benderloch - South Shian Road	4.34	3
OLI	Lorn	Oban	U	26	Argyll Street	0.08	3a
OLI	Lorn		C	27	Tynribbie-Port Appin Road	2.87	3
OLI	Lorn	Oban	U	27	Stafford Street (part)	0.05	3a
OLI	Lorn	Port Appin	C	27	Tynribbie-Port Appin Road	1.03	3a
OLI	Lorn	Taynuilt	U	27	Airds Bay Road	1.40	3a
OLI	Lorn	Tynribbie	C	27	Tynribbie-Port Appin Road	0.22	3a
OLI	Lorn		U	28	Rhunacarn Road (Achnacloich Station)	1.46	3
OLI	Lorn		C	28	Bridge of Orchy Station Road	0.26	3
OLI	Lorn	Oban	U	28	Craigard Road	0.16	3a
OLI	Lorn		C	29	Kilmelford - Kilchrenan Road	26.29	3
OLI	Lorn	Kilmelford	C	29	Kilmelford - Kilchrenan Road	0.08	3a
OLI	Lorn	Oban	U	29	Albert Road	0.27	3a
OLI	Lorn	Taynuilt	U	29	Brochroy Road	1.03	3a

Area	Sub Area	Town	Prefix 1	Road No	Road Name	Km	Maintenance Hierarchy
OLI	Lorn		U	30	Inverawe Road	2.37	3
OLI	Lorn		C	30	Ford - Kilmaha - Barnaline Road	7.61	3
OLI	Lorn	Oban	U	30	John Street	0.05	3a
OLI	Lorn		C	31	Ardanaiseig Road	5.40	3
OLI	Lorn	Oban	U	31	Nursery Lane	0.24	3a
OLI	Lorn		C	32	Oban - Glenloan - Taynuilt Road	16.71	3
OLI	Lorn	Dalmally	U	32	Craig Road	0.79	3a
OLI	Lorn	Oban	U	32	Albert Lane	0.07	3a
OLI	Lorn	Oban	C	32	Glencruitten Road	1.29	2a
OLI	Lorn	Taynuilt	C	32	Oban-Glenlonan-Taynuilt Road	0.37	3a
OLI	Lorn		C	33	Lerags Road	4.73	3
OLI	Lorn	Oban	U	33	Park Hotel Lane	0.08	3a
OLI	Lorn		C	34	Gallanach Road	3.48	3
OLI	Lorn	Oban	U	34	Breadalbane Street	0.36	3a
OLI	Lorn	Oban	C	34	Albany Street	1.45	2a
OLI	Lorn	Oban	C	34	Gallanach Road	0.00	2a
OLI	Lorn		C	35	Cuan Ferry - Toberonochy Road (and Branches)	8.21	3
OLI	Lorn	North Connel	U	35	Moss Road	2.35	3a
OLI	Lorn	Oban	U	35	Breadalbane Lane	0.14	3a
OLI	Lorn	Oban	U	36	William Street	0.05	3a
OLI	Lorn	Appin	U	37	Salachail Road	7.66	3a
OLI	Lorn	Oban	U	37	North Pier	0.24	3a
OLI	Lorn	Oban	U	38	Airds Crescent	0.14	3a
OLI	Lorn	Benderloch	U	39	Old Barcaldine Castle Road	1.42	3a
OLI	Lorn	Benderloch	U	40	Eriska Road	1.80	3a
OLI	Lorn	Oban	U	40	Market Street	0.08	3a
OLI	Lorn	Benderloch	U	41	Lochnell Castle Road	1.92	3a
OLI	Lorn	Oban	U	41	Lochside Street	0.14	3a
OLI	Lorn		U	42	Inverfolla - Port Appin	9.08	3
OLI	Lorn	Oban	U	42	Star Brae	0.12	3a
OLI	Lorn	Port Appin	U	42	Inverfolla-Port Appin	0.09	3a
OLI	Lorn	Oban	U	43	Lochavullin Road	0.58	3a
OLI	Lorn	Appin	U	44	Blarchascaig - North Shian Road	3.62	3a
OLI	Lorn	Oban	U	44	Soroba Lane	0.08	3a
OLI	Lorn	Oban	U	45	High Street	0.10	3a
OLI	Lorn		U	46	Port Ramsay Road	0.95	3
OLI	Lorn	Oban	U	46	Campbell Street	0.11	3a
OLI	Lorn		U	47	Balnagowan Road	1.00	3
OLI	Lorn	Oban	U	47	Queens Park Place (see Station Road)	0.00	2a
OLI	Lorn	Oban	U	47	Station Road	0.17	2a
OLI	Lorn		U	48	Achnacroish Pier Road	1.43	3
OLI	Lorn	Oban	U	48	Shore Street	0.35	1
OLI	Lorn		U	49	Salen Road	1.96	3
OLI	Lorn	Oban	U	49	Glenshellach Terrace	0.37	3a
OLI	Lorn		U	50	Achinduin Road	3.38	3
OLI	Lorn	Oban	U	50	Drimvargie Road	0.09	3a

Area	Sub Area	Town	Prefix 1	Road No	Road Name	Km	Maintenance Hierarchy
OLI	Lorn	Oban	U	51	Dunuaran Road	0.13	3a
OLI	Lorn		U	52	Cullipool Road	1.77	3
OLI	Lorn	Connel	C	52	Connel Village Loop Road	0.47	3a
OLI	Lorn	Oban	U	52	Glenshellach Road	0.87	3a
OLI	Lorn	Oban	U	53	Glenmore Road	0.76	3a
OLI	Lorn		U	54	Ardinamir Road	1.32	3
OLI	Lorn	Oban	U	54	Tower View	0.09	3a
OLI	Lorn	Oban	U	55	Crannaig-a Mhinister	0.52	3a
OLI	Lorn		U	56	Barnabuck Road	3.86	3
OLI	Lorn	Oban	U	56	Pulpit Rock	0.33	3a
OLI	Lorn		U	57	Slaterich Road	0.45	3
OLI	Lorn	Oban	U	57	Villa Road	0.34	3a
OLI	Lorn		U	58	Lower Gylen Road	3.96	3
OLI	Lorn	Oban	U	60	Sinclair Drive	0.14	3a
OLI	Lorn	Dalmally	C	61	Dalmally Village Loop Road	0.77	3a
OLI	Lorn	Oban	U	61	Quarry Road	0.15	3a
OLI	Lorn	Oban	U	62	Miller Road	0.30	3a
OLI	Lorn		U	63	Old Monument Hill Road	3.12	3
OLI	Lorn		C	63	Bridge of Orchy - Forest Lodge Road	5.63	3
OLI	Lorn	Dalmally	U	63	Old Monument Hill Road	0.16	3a
OLI	Lorn	Oban	U	63	Glencruitten Drive	0.35	3a
OLI	Lorn	Oban	U	64	Angus Terrace	0.12	3a
OLI	Lorn	Taynuilt	U	64	Muckairn Churchyard Road	0.11	3a
OLI	Lorn	Oban	U	65	Knipoch Place	0.13	3a
OLI	Lorn	Oban	U	66	Dalitart Drive	0.24	3a
OLI	Lorn	Oban	C	66	Corran Esplanade	0.00	2a
OLI	Lorn	Oban	C	66	Alexandra Road	2.98	2a
OLI	Lorn	Oban	C	66	Ganavan Road	0.00	2a
OLI	Lorn	Dalmally	U	68	Orchy Cottages Housing Scheme Road	0.05	3a
OLI	Lorn	Oban	U	68	Mossfield Avenue	0.27	3a
OLI	Lorn	Oban	U	69	Mossfield Drive	0.23	3a
OLI	Lorn	Taynuilt	U	69	Achloman Housing Scheme Road(formerly Aldersyde)	0.19	3a
OLI	Lorn	Oban	U	72	Polvinster Road	0.63	3a
OLI	Lorn	Oban	U	73	Part of Drummore Road	0.24	3a
OLI	Lorn		U	74	Loop Road, Dalavich	0.39	3
OLI	Lorn	Oban	U	74	Corran Brae	0.41	3a
OLI	Lorn		U	75	School Road, Dalavich	0.05	3
OLI	Lorn	Oban	U	75	Bayview Road	0.11	3a
OLI	Lorn	Connel	U	76	Rughrich Road	0.69	3a
OLI	Lorn	Oban	U	76	Lismore Crescent	0.13	3a
OLI	Lorn		U	77	Cladich Link Road	0.34	3
OLI	Lorn	Oban	U	77	Castle Road	0.07	3a
OLI	Lorn	North Connel	C	78	Observer Corps Road	0.85	3a
OLI	Lorn	Oban	U	78	Lorn Avenue	0.23	3a
OLI	Lorn	Connel	U	79	Achaleven Road	0.55	3a

Area	Sub Area	Town	Prefix 1	Road No	Road Name	Km	Maintenance Hierarchy
OLI	Lorn	Oban	U	79	Iona Drive	0.07	3a
OLI	Lorn	Oban	U	80	Laggan Road	0.06	3a
OLI	Lorn	Oban	U	81	Cruachan Crescent	0.18	3a
OLI	Lorn	Benderloch	U	82	Ach-in-duin Housing Scheme Road	0.06	3a
OLI	Lorn	Oban	U	82	Kerrera Terrace	0.18	3a
OLI	Lorn	Connel	U	83	Achaleven Cottages Housing Scheme Road	0.24	3a
OLI	Lorn	Connel	U	84	Deirdre Housing Scheme Road	0.14	3a
OLI	Lorn	Oban	U	84	Ulva Road	0.08	3a
OLI	Lorn	North Connel	U	85	North Connel (Black Crofts) Housing Scheme Road	0.06	3a
OLI	Lorn	Oban	U	85	Islay Road	0.08	3a
OLI	Lorn		U	86	Fladda Housing Scheme Road, Cullipool	0.10	3
OLI	Lorn	Oban	U	86	Jura Road	0.12	3a
OLI	Lorn	Ellenabeich	U	87	Seaview Terrace Housing Scheme Road	0.10	3a
OLI	Lorn	Oban	U	87	Mull Terrace	0.08	3a
OLI	Lorn	Kilmore	U	88	Feochan Cottages Housing Scheme Road	0.06	3a
OLI	Lorn	Oban	U	88	Shuna Terrace	0.14	3a
OLI	Lorn	Oban	U	89	Scarba Terrace	0.05	3a
OLI	Lorn	Port Appin	U	89	Shuna View Housing Scheme Road	0.16	3a
OLI	Lorn	Achnacroish	U	90	Newfield Terrace Housing Scheme Road	0.10	3a
OLI	Lorn	Oban	U	90	Lochavullin Drive	0.23	3a
OLI	Lorn	Oban	U	91	Crannog Lane	0.14	3a
OLI	Lorn	Dunbeg	U	92	Etive Road (Dunbeg Village Roads)	0.20	3a
OLI	Lorn	Dunbeg	U	92	Dunstaffnage Castle Road (Dunbeg Village Roads)	0.32	3a
OLI	Lorn	Dunbeg	U	92	Camus Road (Dunbeg Village Roads)	0.27	3a
OLI	Lorn	Dunbeg	U	92	Meadow Road (Dunbeg Village Roads)	0.34	3a
OLI	Lorn	Dunbeg	U	92	Jane Road (Dunbeg Village Roads)	0.21	3a
OLI	Lorn	Dunbeg	U	92	Castle Road (Dunbeg Village Roads)	0.15	3a
OLI	Lorn	Dunbeg	U	92	Lochnell Road (Dunbeg Village Roads)	0.49	3a
OLI	Lorn	Dunbeg	U	92	Lorn Road (Dunbeg Village Roads)	0.76	3a
OLI	Lorn	Oban	U	92	Lynn Court	0.08	3a
OLI	Lorn	Dalmally	U	93	Glenview Housing Scheme Road	0.34	3a
OLI	Lorn	Oban	U	93	Millpark Road	0.11	3a
OLI	Lorn	Oban	U	94	Millpark Avenue	0.21	3a
OLI	Lorn	Toberonochy	U	94	Kilchattan Cottages Housing Scheme Road	0.05	3a
OLI	Lorn	Bonawe	U	95	Kenmore Cottages Housing Scheme Road	0.11	3a
OLI	Lorn	Oban	U	95	Millpark Place	0.06	3a
OLI	Lorn	Ellanbeich	U	96	Back Street	0.13	3a
OLI	Lorn	Oban	U	96	Lynn Gardens	0.03	3a
OLI	Lorn	Oban	U	97	Burnside Place	0.06	3a

Area	Sub Area	Town	Prefix 1	Road No	Road Name	Km	Maintenance Hierarchy
OLI	Lorn	Oban	U	98	Scalpay Terrace	0.08	3a
OLI	Lorn	Taynuilt	U	98	Balindore Road	1.48	3a
OLI	Lorn	Connel	U	99	Grosvenor Crescent	0.18	3a
OLI	Lorn	Oban	U	99	Colonsay Terrace	0.11	3a
OLI	Lorn	Clachan Seil	U	100	Cnoc a' Challtuinn Housing Scheme Road	0.19	3a
OLI	Lorn	Oban	U	100	Lunga Road	0.11	3a
OLI	Lorn	Oban	U	101	Grianach Gardens	0.07	3a
OLI	Lorn	Taynuilt	U	101	Cruachan Cottages Housing Scheme Road	0.34	3a
OLI	Lorn		U	102	Glenmore Road	0.14	3
OLI	Lorn	Lochawe	U	103	St Conan's Road Housing scheme	0.37	3a
OLI	Lorn	Appin	U	105	Lon Ruadh Housing Scheme Road, Tynribbie	0.08	3a
OLI	Lorn	Appin	U	106	Luringnish Loop Road	1.30	3a
OLI	Lorn	Ganavan	U	107	Fearnhill (Ganavan Private Housing Site Road)	0.48	3a
OLI	Lorn	Ellanbeich	U	108	Ellanbeich Car Park Road	0.14	3a
OLI	Lorn	Connel	U	109	Dunstaffnage Hotel Road	0.13	3a
OLI	Lorn	North Connel	U	110	Lora View Housing Scheme Road	0.40	3a
OLI	Lorn	Taynuilt	U	111	Kirkton Road	0.23	3a
OLI	Lorn	Appin	U	112	Glenstockdale Road	0.35	3a
OLI	Lorn	Appin	U	113	Appin Crofts Road	0.14	3a
OLI	Lorn		U	114	Balure Road, Lismore	1.50	3
OLI	Lorn	Isle of Seil	U	115	Ferry Houses Road, Cuan	0.05	3a
OLI	Lorn	Oban	U	116	Kilbowie Housing Scheme Road	0.24	3a
OLI	Lorn	North Connel	U	117	Etive Park	0.10	3a
OLI	Lorn	Oban	U	117	McCaig Road (includes No 83)	0.65	2a
OLI	Lorn	Connel	U	118	Ferryfield Road	0.18	3a
OLI	Lorn	Oban	U	118	Lonan Drive	0.27	3a
OLI	Lorn	Connel	U	119	Ferryfield Drive	0.10	3a
OLI	Lorn	Oban	U	119	Aray Garden	0.05	3a
OLI	Lorn	Oban	U	120	Orchy Gardens	0.25	3a
OLI	Lorn	Oban	U	121	Nant Drive	0.58	3a
OLI	Lorn	Oban	U	122	Creran Gardens	0.19	3a
OLI	Lorn		U	123	Arduaine Loop Road	0.24	3
OLI	Lorn	Oban	U	123	Ure Gardens	0.05	3a
OLI	Lorn	Oban	U	124	Coe Gardens	0.13	3a
OLI	Lorn	North Connel	U	125	Strath Road	0.10	3a
OLI	Lorn	Oban	U	125	Etive Gardens	0.12	3a
OLI	Lorn	Ganavan	U	126	Sandyhills Drive	0.04	3a
OLI	Lorn	Oban	U	126	Feochan Gardens	0.11	3a
OLI	Lorn	Ganavan	U	127	Seafield Gardens	0.13	3a
OLI	Lorn	Oban	U	127	Lawe Road	0.08	3a
OLI	Lorn	Balvicar	U	128	Kilbrandon Cottages	0.14	3a
OLI	Lorn	Oban	U	128	Soroba Hill Road	0.17	3a
OLI	Lorn	Oban	U	129	Lynn Road	0.28	2a
OLI	Lorn		U	130	Auction Mart Access Road, Oban	0.20	3

Area	Sub Area	Town	Prefix 1	Road No	Road Name	Km	Maintenance Hierarchy
OLI	Lorn	Oban	U	130	Mill Lane, Lochavullin	0.19	3a
OLI	Lorn	Oban	U	131	Glencruitten Court	0.09	3a
OLI	Lorn	Oban	U	132	Glengallan Road	1.25	2a
OLI	Lorn	Toberonochy	U	132	Toberonochy Village Roads	0.29	3a
OLI	Lorn		U	133	Cullipool Village Roads	0.29	3
OLI	Lorn	Oban	U	133	Railway Station Access Road (Incl Taxi Stance)	0.10	3a
OLI	Lorn		U	134	Loch Creran Loop Road	5.29	3
OLI	Lorn	Oban	U	134	The Greens (Glencruitten)	0.11	3a
OLI	Lorn	Connel	U	135	Glen Park	0.07	3a
OLI	Lorn	Oban	U	135	Pulpit Drive	0.39	3a
OLI	Lorn	Oban	U	136	Pulpit Road	0.11	3a
OLI	Lorn	Port Appin	U	136	Bealach Na Mara	0.19	3a
OLI	Lorn	Benderloch	U	137	Keil Gardens	0.26	3a
OLI	Lorn	Oban	U	137	Glenshellach Business Park Roads	0.27	3a
OLI	Lorn	Oban	U	138	Morvern Hill	0.46	3a
OLI	Lorn	Taynuilt	U	138	Achnaferna	0.14	3a
OLI	Lorn	Balvicar	U	139	Cnoc Beag	0.07	3a
OLI	Lorn	Oban	U	139	Creag An Airm	0.16	3a
OLI	Lorn	Oban	U	140	Glengallan Drive	0.22	3a
OLI	Lorn	Oban	U	141	Balvicar Road	0.18	3a
OLI	Lorn	Oban	U	142	Craighouse Avenue	0.12	3a
OLI	Lorn	Oban	U	143	Nelson Road	0.18	3a
OLI	Lorn	Oban	U	144	Campbell crescent	0.05	3a
OLI	Lorn		A	816	Lochgilphead-Oban Road	29.04	1
OLI	Lorn	Kilmelford	A	816	Lochgilphead-Oban Road	0.59	1
OLI	Lorn	Kilninver	A	816	Lochgilphead-Oban Road	0.41	1
OLI	Lorn	Oban	A	816	Lochgilphead-Oban Road	1.37	1
OLI	Lorn		A	819	Inveraray - Dalmally Road	13.34	1
OLI	Lorn		B	840	East Lochaweside Road	22.49	3
OLI	Lorn		B	844	Kilninver - Ellanbeich Road	14.68	2
OLI	Lorn		B	845	Barcaldine - Bonawe Ferry	22.10	3
OLI	Lorn	Taynuilt	B	845	Taynuilt - Ichrachan - Taychreggan	1.95	2
OLI	Lorn		B	8003	Balvicar - Cuan Road	2.70	2
OLI	Lorn		B	8045	Lismore Point - Dalnarrow Road	14.97	3
OLI	Lorn		B	8074	Glenorchy Road	17.06	3
OLI	Lorn		B	8077	Stronmilchan Road	5.62	3
OLI	Mull	Tobermory	U	2	Victoria Street	0.20	3a
OLI	Mull	Tobermory	U	3	Ledaig Branch Road	0.11	3a
OLI	Mull	Tobermory	U	4	Slaughter House Road	0.10	3a
OLI	Mull	Tobermory	U	5	Viewmount Drive	0.21	3a
OLI	Mull		U	6	Croig Road	1.70	3
OLI	Mull	Tobermory	U	6	Erray Road	1.03	3a
OLI	Mull	Tobermory	U	7	Erray Branch Road	0.36	3a
OLI	Mull	Tobermory	U	8	Western Road	0.41	3a
OLI	Mull		U	9	Cuin Road	0.90	3
OLI	Mull	Dervaig	U	9	Cuin Road	0.39	3

Area	Sub Area	Town	Prefix 1	Road No	Road Name	Km	Maintenance Hierarchy
OLI	Mull	Tobermory	U	10	West Street	0.10	3a
OLI	Mull	Tobermory	U	11	Back Breadalbane Street	0.24	3a
OLI	Mull		U	12	Kilpatrick Road	1.80	3
OLI	Mull	Tobermory	U	12	North Street	0.07	3a
OLI	Mull		U	13	Gorten Road	2.38	3
OLI	Mull	Tobermory	U	13	Craigspuire Road	0.19	3a
OLI	Mull		U	14	Grasspoint Road	5.15	3
OLI	Mull	Tobermory	U	14	Springbank Brae	0.16	3a
OLI	Mull	Tobermory	U	15	Baliscate Road	0.31	3a
OLI	Mull		U	16	Croggan Road	6.15	3
OLI	Mull	Tobermory	U	16	Cemetery Road	0.34	3a
OLI	Mull	Tobermory	U	17	Eyrie Road	0.21	3a
OLI	Mull		U	18	Lee - Knockan - Ardtun Road	3.60	3
OLI	Mull	Tobermory	U	18	Rhearic Road	0.56	3a
OLI	Mull	Tobermory	U	19	Beadoun Road	0.44	3a
OLI	Mull		U	20	Uisken Road	4.62	3
OLI	Mull	Bunessan	U	20	Uisken Road	0.29	3
OLI	Mull	Tobermory	U	20	Strongarbh Road	1.17	3a
OLI	Mull		U	21	Kintra Road	3.04	3
OLI	Mull	Tobermory	U	21	Avoch Road	0.13	3a
OLI	Mull		U	22	Inchkenneth Road	0.40	3a
OLI	Mull	Tobermory	U	22	Hillcrest Road	0.09	3a
OLI	Mull	Tobermory	U	23	Rockburn Road	0.07	3a
OLI	Mull	Tobermory	U	24	Ruarigan Terrace	0.05	3a
OLI	Mull	Tobermory	U	25	Rockfield Road	0.48	3a
OLI	Mull	Tobermory	U	26	Rockfield Branch Road	0.08	3a
OLI	Tiree		U	28	Cornaigbeg Road	2.90	3
OLI	Tiree		U	29	Kenovay - Crossapoll Road	3.64	3
OLI	Tiree		U	30	Moss Church - Balinoe Road	2.74	3
OLI	Tiree		U	32	Moss - Kilkenneth Road	1.37	3
OLI	Tiree		U	33	Barrapoll - Sandaig - Hough Road	4.12	3
OLI	Coll		U	37	Crossapol Road	1.53	3
OLI	Mull	Tobermory	U	37	Glen Iosal Road	0.08	3a
OLI	Coll		U	38	Arileod - Totronald Road	1.61	3
OLI	Mull	Tobermory	U	38	Baliscate Industrial Estate	0.11	3a
OLI	Mull	Tobermory	U	39	Riverside Court	0.10	3a
OLI	Tiree		U	41	Cornaig Mill - Cornaig P.O. Road	0.39	3
OLI	Mull		U	42	Kilfinichen - Tioran Road	1.58	3
OLI	Tiree		U	43	Ballevullin Continuation Road	1.27	3
OLI	Mull		C	44	Ulva Ferry Road	0.64	3
OLI	Tiree		U	45	Scarinish Mole Approach Road	0.66	3
OLI	Mull		C	45	Dervaig - Toroloisk Road	6.80	3
OLI	Mull		C	46	Dervaig - Aros Bridge Road	16.38	3
OLI	Oronsay		U	46	Oronsay Road	1.77	3
OLI	Mull	Dervaig	C	46	Dervaig - Aros Bridge Road	0.16	3
OLI	Mull		C	47	Glengorm Road	6.32	3
OLI	Tiree		U	47	Vaul Road	2.03	3

Area	Sub Area	Town	Prefix 1	Road No	Road Name	Km	Maintenance Hierarchy
OLI	Mull	Tobermory	C	47	Glengorm Road	0.32	3
OLI	Mull		C	48	Carsaig Road	6.40	3
OLI	Colonsay		U	48	Urugaig Road	1.69	3
OLI	Mull	Salen	U	48	Bentalla Crescent Housing Scheme Road	0.20	3a
OLI	Mull		C	49	Ardtun Road	2.89	3
OLI	Mull	Bunessan	C	49	Ardtun Road	0.51	3
OLI	Tiree		U	50	Cornaigmore School Road	0.55	3
OLI	Iona		C	50	Laggandoran - West Machair Road	3.96	3
OLI	Tiree		C	51	Moss Church - Hough - Cornaig Road	6.23	3
OLI	Mull	Bunessan	U	52	Millbrae Terrace Housing Scheme Road	0.15	3a
OLI	Coll		U	53	Arinagour Housing Scheme Road, Coll	0.42	3
OLI	Mull		C	54	Ardura - Lochbuie Road	12.70	3
OLI	Mull	Craignure	U	54	Kirk Terrace Housing Scheme Road	0.05	3a
OLI	Tiree		U	55	Struan Terrace (Crossapol Housing Scheme Road)	0.06	3
OLI	Tiree		U	55	Reef Terrace (Crossapol Housing Scheme Road)	0.03	3
OLI	Mull	Dervaig	U	56	Kilmore Terrace Housing Scheme Road	0.11	3a
OLI	Mull	Bunessan	U	57	Millbrae Road, Bunessan	0.45	3a
OLI	Mull	Craignure	U	58	Burnside Cottages Housing Scheme Road	0.18	3a
OLI	Coll		U	59	Arinagour Pier Road	0.77	3
OLI	Tiree		U	60	Miodar Road	1.08	3
OLI	Tiree		U	61	Milton Road	1.66	3
OLI	Tiree		U	62	Salum road	0.89	3
OLI	Tiree		U	63	Ruaig Road	0.95	3
OLI	Tiree		U	64	Kilmoluaig Road	2.19	3
OLI	Tiree		U	65	Ballevullin East Road	0.58	3
OLI	Tiree		U	66	Middleton Road	1.06	3
OLI	Tiree		U	67	Hynish West Road	1.13	3
OLI	Tiree		U	68	Balemartine - Sliebh Road	0.93	3
OLI	Mull	Tobermory	C	68	Breadalbane Street	0.72	3
OLI	Tiree		U	69	Balephuill - Slisbh Road	0.42	3
OLI	Mull		U	70	Calgary Holdings Road	4.38	3
OLI	Mull		U	71	Knockvologan Road	5.02	3
OLI	Mull	Fionnphort	U	71	Knockvologan Road	0.14	3a
OLI	Mull	Fionnphort	U	72	Fionnphort Road	0.18	3a
OLI	Mull		U	73	Ardalanish Road	0.97	3
OLI	Mull		U	74	Island Road	0.97	3
OLI	Mull		U	75	Scoor Road	1.66	3
OLI	Mull		U	76	Balmeanach Road	0.82	3
OLI	Mull		U	77	Pottie Road	0.40	3
OLI	Mull		U	78	Catchean Road	0.32	3
OLI	Mull		U	79	Aros Mains Road	0.87	3

Area	Sub Area	Town	Prefix 1	Road No	Road Name	Km	Maintenance Hierarchy
OLI	Mull	Craignure	U	80	Java Housing Scheme Road	0.53	3a
OLI	Mull	Salen	U	81	Salen Loop Road	0.48	3a
OLI	Mull		U	82	Leiter Road	0.69	3
OLI	Mull	Salen	U	83	Jarvisfield Place	0.11	3a
OLI	Tiree		U	84	Hillcrest Road, Balephetrish	0.39	3
OLI	Tiree		U	85	Loch a' Phuill Road, Balephuill	0.63	3
OLI	Tiree		U	86	Balevullin North Road	0.66	3
OLI	Tiree		U	87	Odhnasgair Road, Baugh	1.48	3
OLI	Tiree		U	88	Aird Deas Road, Caoles	0.92	3
OLI	Tiree		U	89	Gott Road	0.51	3
OLI	Mull		A	848	Tobermory Pier - Salen Pier Road	15.99	1
OLI	Mull	Salen	A	848	Tobermory Pier -Salen Pier Road	0.56	1
OLI	Mull	Tobermory	A	848	Eas Brae	0.00	1
OLI	Mull	Tobermory	A	848	Salen Road	1.33	1
OLI	Mull	Tobermory	A	848	Main Street	0.00	1
OLI	Mull		A	849	Salen-Craignure	11.10	1
OLI	Mull		A	849	Craignure-Iona Ferry Road	61.78	2
OLI	Mull	Bunessan	A	849	Salen-Iona Ferry Road	0.67	1
OLI	Mull	Craignure	A	849	Salen-Iona Ferry Road	0.92	1
OLI	Mull	Fionnphort	A	849	Salen-Iona Ferry Road	0.56	1
OLI	Mull	Salen	A	849	Salen-Iona Ferry Road	0.77	1
OLI	Mull	Tobermory	B	882	Cemetery Road	1.09	2a
OLI	Mull	Tobermory	B	882	Argyll Terrace (part)	0.00	2a
OLI	Mull	Tobermory	B	882	Back Brae	0.00	2a
OLI	Mull	Tobermory	B	882	Dervaig Road	0.00	2a
OLI	Mull	Tobermory	B	882	Albert Street	0.00	2a
OLI	Mull		A	884	Fishnish Ferry Road	1.40	2
OLI	Mull		B	8035	Salen - Gruline - Kinloch Road	32.21	3
OLI	Mull	Salen	B	8035	Salen-Gruline-Kinloch Road	0.42	3
OLI	Tiree		B	8065	Scarinish - Barrapoll Road	12.47	3
OLI	Tiree		B	8066	Heylipol - Hynish Road	4.41	3
OLI	Tiree		B	8067	Balemartine-Balephuill Road	2.98	3
OLI	Tiree		B	8068	Heylipol - Cornaig - Scarinish Road	12.91	3
OLI	Tiree		B	8069	Gott Bay - Caoles Road	6.08	3
OLI	Coll		B	8070	Arinagour - Crossapoll Road	8.66	3
OLI	Coll		B	8071	Arinagour - Ballyhough Road	7.72	3
OLI	Coll		B	8072	Arnabost - Sorisdale Road	8.21	3
OLI	Mull		B	8073	Tobermory-Calgary-Gruline Road	48.41	3
OLI	Mull	Dervaig	B	8073	Tobermory-Calgary-Gruline Road	0.41	3
OLI	Mull	Tobermory	B	8073	Tobermory-Calgary-Gruline Road	0.32	3
OLI	Colonsay		B	8085	Scalasaig - Garvard Road	3.06	3
OLI	Colonsay		B	8086	Scalasaig Pier - Kilchattan - Kiloran Road	9.98	3
OLI	Colonsay		B	8087	Scalasaig - Kiloran Road	3.77	3

Appendix 2

Guide to Training Levels

TRAINING LEVEL PROFILES

Appendix 2

Job Description	Main Duties	Preferred Education/Training Required	Experience
Area Managers	To manage road maintenance network	Chartered Civil Engineering Member of Institute of Civil Engineers. IOSH Managing Health and Safety	Minimum of 7 years roads
Senior Engineer	To help manage road maintenance network	Chartered / Incorporated Civil Engineering Member of Institute of Civil Engineers IOSH Managing Health and Safety	Minimum of 5 years roads
Technical Officer	To help manage road maintenance network	Incorporated Civil Engineering IOSH Managing Health and Safety	Minimum of 3 years roads
Technician	To provide technical back up	HNC Civil Engineering	
Superintendent	To provide day to day control of roads squads	IOSH Managing Health and Safety HAUC Certificate	Minimum of 5 years roads
Inspector	To identify defects To control work of utilities	HAUC Certificate NRSWA / Moleseye Training	Minimum of 5 years roads
Chargehand	Hands on control of road squad	HAUC Certificate Appropriate skills training LGV Driver SVQ Winter Maintenance	Minimum of 3 years roads squad
Roadman	Road Maintenance	HAUC Certificate(30%) Appropriate skills training LGV Driver SVQ Winter Maintenance	

Appendix 3

Defect Intervention Levels

Defect	Reasons for Classification / Intervention Level
Road	
Subsidence	Potential for deep void
Sunken Track	If >40mm deep If > 100mm deep then 2 hr response
Failed Reinstatement	If >40mm deep and >150mm dia on carriageway If > 100mm deep and > 150mm dia then 2 hr response
Potholes Rank 1, 2, 2a Roads	If >40mm deep and >150mm dia on carriageway If > 100mm deep and > 150mm dia then 2 hr response
Potholes Rank 3, 3a Roads	If > 100mm deep and > 150mm dia
Potholes Rank1, 1a Footways	If > 25mm deep and > 150mm dia
Trip or Rocking Slabs	Sign and guard and programme repair when movement > than 40mm
Missing Ironwork Carriageway	If > 150mm dia.
Missing Ironwork Footway	All missing covers
Ponding Rank 1,2,2a	Affecting entire running traffic lane. In Winter when conditions liable to freeze
Water Discharge over Footway	In Winter when conditions liable to freeze
Flooding	If danger to vehicles or damage to property then 2 hr response
Blocked Gullies	When causing ponding or flooding
Damaged Pedestrian Barrier	If immediate danger to pedestrian or vehicles
Damaged Safety Fence	If immediate danger to pedestrian or vehicles

Defect	Reasons for Classification / Intervention Level
Lighting	
Open or Missing Doors to Columns / Pillars	2hr Response Electrical Danger
Broken or Low Wire	2hr Response Electrical and Physical Danger
Damaged Column in dangerous position	2hr Response Electrical and Physical Danger
Traffic	
Traffic Lights out of Action	Danger to road Users

Defect	Reasons for Classification / Intervention Level
Road	
Subsidence	Where no voids are evident
Sunken Track	If < 40mm but >25mm Deep
Failed Reinstatement	If < 40mm but >25mm Deep
Potholes Rank1, 2, 2a Roads	If < 40mm but >25mm Deep and > 150mm dia
Potholes Rank 3, 3a Roads	If < 100mm but >40mm Deep and > 150mm dia
Potholes Rank 1, 1a Footways	If < 40mm but >25mm Deep and > 150mm dia
Potholes Rank 2, 3 Footways	If > 40mm Deep and > 150mm dia
Open Joints	Program repair
Edge Failure	Program repair
Rocking Slabs	Program repair
Worn or stripping anti skid	Program repair
Missing Ironwork	On Carriageway < 150mm dia
Ponding	When no freezing probability
Water Discharge over Carriageway or Footway	When no freezing probability
Blocked Gullies	When not causing ponding or flooding
Damaged Pedestrian Barrier	When no immediate danger to pedestrians or vehicles
Damaged Safety Fence	When no immediate danger to pedestrians or vehicles

Defect	Reasons for Classification / Intervention Level
Traffic	
Missing or Worn Road Markings	Program repair/ replacement
Missing or Damaged Traffic Signs	Program repair/ replacement
Low Traffic Signs on Footway	Danger to Pedestrians
Signs obscured by Trees or Scrub	Program clearing obstruction
Groundworks	
Scrub or Grass obscuring Sightlines	Program response or via landowner
Low Trees overhanging Footways or Carraigeways	Program response or via landowner

Appendix 4

Condition Standards

Hierarchy Ranking	Location	Description	Condition Standard (per 100m length)
1	Carriageway	Minor deterioration: - potholing, fine cracking, permeable surfaces, fretting of existing surfaces.	Where > than 30% of surface area then consideration of surface treatment.
		Major Deterioration: - Cracking, coarse crazing, serious loss of aggregate, serious permeability.	Where > than 10% of surface area Patch or surface treat Where > than 30% of surface area Patch or resurface.
		Previously patched surface resulting in numerous joints.	Where >40% then consideration for surface treatment.
		Loss of Skid Resistance / texture over whole surface area.	Consideration for Surface Dressing or other proprietary treatment.
		Edge Deterioration	>Than 20% of length of carriageway edge patching required. >Than 50% of length then Edge Strengthen and or kerb.
		Wheel Track rutting	>20mm deep over 10% of length then patch or local resurfaces. >20mm deep over 90% of length of road then Reshape effected lane

CONDITION STANDARDS
CARRIAGEWAYS

Hierarchy Ranking	Location	Description	Condition Standard (per 100m length)
2 / 2a	Carriageway	Minor deterioration: - potholing, fine cracking, permeable surfaces, fretting of existing surfaces.	Where > than 30% of surface area then consideration of surface treatment.
		Major Deterioration: - Cracking, coarse crazing, serious loss of aggregate, serious permeability.	Where > than 15% of surface area Patch or surface treat Where > than 40% of surface area Patch or resurface
		Previously patched surface resulting in numerous joints.	Where >50% then consideration for surface treatment.
		Loss of Skid Resistance over whole surface area.	Consideration for Surface Dressing
		Edge Deterioration	>Than 20% of length or area of carriageway edge patching required >Than 50% of length or area then Edge Strengthen and or kerb
		Wheel Track rutting	>20mm deep over 25% of length then patch or local resurfaces. >20mm deep over 90% of length of road then resurface effected lane

CONDITION STANDARDS
CARRIAGEWAYS

Hierarchy Ranking	Location	Description	Condition Standard (per 100m Length)
3 / 3a	Carriageway	Minor deterioration: - potholing, fine cracking, permeable surfaces, fretting of existing surfaces.	No specified minimum standard.
		Major Deterioration: - Cracking, coarse crazing, serious loss of aggregate, serious permeability.	Where > than 25% of surface area Patch and surface treat Where > than 50% of surface area Patch or resurface
		Edge Deterioration	>Than 50% of length of carriageway edge patching to be considered
		Wheel Track rutting	>40mm deep over 90% of length of road then resurface effected lane

CONDITION STANDARDS
FOOTWAYS

Hierarchy Ranking	Location	Description	Condition Standard
1	Footways	Course cracking of the surface. Course crazing, depressions > than 25mm	If affecting over 40 % of surface area then consideration for surface treatment
2	Footways	Course cracking of the surface. Course crazing, depressions > than 25mm	Where >40% then consideration for surface treatment.

CONDITION STANDARDS
DRAINAGE

Hierarchy Ranking	Location	Description	Condition Standard
1//2a/3a	Culverts	Culverts and manholes and Silt Traps	Inspected and Cleaned annually.
2		Culverts and manholes and Silt Traps	Inspected and Cleaned every two years.
3		Culverts and manholes and Silt Traps	Inspected and Cleaned every three years.
1/2/2a/3/3a	Offlets	Drainage offlets from carriageway	Cleaned annually
1	Ditches	Road drainage ditches and cut off ditches	Inspected and Cleaned every 3 years `
2/2a	Ditches	Road drainage ditches and cut off ditches	Inspected and Cleaned every 4 years
3/3a	Ditches	Road drainage ditches and cut off ditches	Inspected and Cleaned every 5 years
all	Gullies	Cleaning of Gullies	Cleaned 3 times every 2 years
1	French Drains	Inspecting and Jetting	Inspected and Jetted every 3 years
2/2a	French Drains	Inspecting and Jetting	Inspected and Jetted every 4 years
3/3a	French Drains	Inspecting and Jetting	Inspected and Jetted every 5 years

CONDITION STANDARDS
DRAINAGE

Hierarchy Ranking	Location	Description	Condition Standard
1	French Drains	Replace Filter Material	Replace Filter Material as required but at min of 1 in 10 yrs
2/2a	French Drains	Replace Filter Material	Replace Filter Material as required but at min of 1 in 15 yrs
3/3a	French Drains	Replace Filter Material	Replace Filter Material as required but at min of 1 in 20 yrs
1	Drainage Pipework	Inspecting and Jetting	Inspected and Jetted every 3 years
2/2a	Drainage Pipework	Inspecting and Jetting	Inspected and Jetted every 4 years
3/3a	Drainage Pipework	Inspecting and Jetting	Inspected and Jetted every 5 years

CONDITION STANDARDS
GRASS VERGES / WEED KILLING

APPENDIX 4 6 of 11

Hierarchy Ranking	Item	Description	Standard
1	Grass Cut	Cut verges	2m swathe twice per year June and August September. Also identified sight lines
2/3/3a	Grass Cut	Cut Verges	1m swathe twice per year June and August September. Also identified sight lines. 2 m swathe on a 1 in 4 year cycle to reduce scrub growth.
1/2a	Grass Cut	Amenity cut in built up areas	4 times per year to areas as per schedules.
1	Weedkilling	Spray French drains for weed prevention with approved weedkiller	Once per year.
2/3	Weedkilling	Spray French drains for weed prevention with approved weedkiller	Once every 3 year.
1/2a	Weedkilling	Urban areas Spray for weed prevention with approved weedkiller Kerbs and Heel Kerbs	Once per year.
3	Weedkilling	Rural footways Spray for weed prevention with approved weedkiller Kerbs and Heel Kerbs	Spray for weed prevention with approved weedkiller Kerbs and Heel Kerbs.

CONDITION STANDARDS
TRAFFIC SIGNS

Hierarchy Ranking	Item	Description	Standard
1/2/2a/3a	Traffic signs	Physical condition / integrity of Signs	As Required for Safety should be inspected annually
3		Physical condition / integrity of Signs	As Required for Safety should be inspected every two years
All		Replacement and repair of damaged signs and bollards	Normally Treated as Cat 1 or 2 safety defect

CONDITION STANDARDS
ROAD MARKINGS

Hierarchy Ranking	Item	Description	Standard
All	Road Markings	Replacement after Surface Treatment or Surface replacement	All mandatory markings that existed prior to treatment should be replaced as soon as reasonably practicable after completion of works. If not possible signage or temporary marking must be provided in areas where their absence could lead to danger.
1/2 and known accident black spots		Worn Markings	Should be replaced when >40% of their area becomes ineffective or worn away. Or after five years
2a		Worn Markings	Should be replaced when >50% of their area becomes ineffective or worn away. Or after seven years.
3/3a		Worn Markings	Should be replaced when >50% of their area becomes ineffective or worn away. No set minimum replacement.

CONDITION STANDARDS
FENCES AND BARRIERS

Hierarchy Ranking	Item	Description	Standard
All	Safety Fence.	Tensioning of bolts checked and reset to correct torque.	Every two years.
All	Safety Fence	Damage	Treated as Cat 1 defect unless damage is obviously superficial then program repair.
footway 1 & 2	Pedestrian Guard-rail	Damage	Treated as Cat 1 defect unless damage is obviously superficial then program repair.

CONDITION STANDARDS
TRAFFIC SIGNALS

Hierarchy Ranking	Item	Description	Standard
All	Traffic Lights	Defects in operation.	Treat as Cat 1.
All	Traffic Lights	Urgent Faults	Treat as Cat 1- 2 hrs response where practicable. The use of temporary lights may be required.
All	Traffic Lights	Faults	Repair within one week.
All	School Crossing Patrol Signals	Faults	Repair by end of next working day during term time.

CONDITION STANDARDS
 STREET LIGHTING REQUIRED TO COMPLY
 WITH 16TH EDITION WIRING REGULATIONS

Hierarchy Ranking	Item	Description	Standard
1,2a,3a	Distribution pillar	Preventative maintenance 1. check all terminals 2. Clean 3. Check earthing 4. Grease all moving parts	Minimum of once in every four years.
1,2a,3a	St Lighting Column	Preventative maintenance 1. check all terminals 2. Clean 3. Check earthing 4. Grease all moving parts 5. Assess column condition	Minimum of once in every four years.
1,2a,3a	Circuit testing	Preventative maintenance 1. Continuity test 2. Insulation resistance test. 3. Polarity Test 4. Earth loop impedance test 5. Earth electrode test 6. Marking circuit diagram	Minimum of once in every four years.
1,2a,3a	St Lighting Lamp Change	Change lamps	Minimum of once in every 3.5 yrs

IF THE CONDITION STANDARDS FOR
CARRIAGEWAYS ARE ACHIEVED
THE FOLLOWING SHOULD RESULT

Appendix 4 11 of 11

Hierarchy Ranking	Location	Description	Condition Standard
1	Carriageway	Resurfacing of Carriageway	1 in 40 years
2	Carriageway	Resurfacing of Carriageway	1 in 45 years
2a	Carriageway	Resurfacing of Carriageway	1 in 50 years
3	Carriageway	Resurfacing of Carriageway	1 in 70 years
3a	Carriageway	Resurfacing of Carriageway	1 in 75 years
1	Footway	Surface Treatment of Footway	1 in 25 years
2	Footway	Surface Treatment of Footway	No set standard
1	Carriageway	Surface Dressing of Carriageway	1 in 12 years
2	Carriageway	Surface Dressing of Carriageway	1 in 15 years
2a	Carriageway	Surface Dressing of Carriageway	1 in 15 years
3	Carriageway	Surface Dressing of Carriageway	1 in 20 years
3a	Carriageway	Surface Dressing of Carriageway	1 in 25 years